

SUNPOLE C

STAND-ALONE CONNECTED LIGHTING SOLUTION



ECLATEC



SUNPOLE C

The result of the French leader in public lighting's research and development, SUNPOLE C is a reliable and efficient solar offer **designed and manufactured in France**. It features:

- a **high-performance LED luminaire** suitable for all applications thanks to a wide range of photometric distributions and colour temperatures from **Tunable White** environmentally-friendly solutions,
- **SMART features** with night-time dimming, motion detection, dynamic lighting and remote management to adapt to every use,
- a **French LITHIUM battery** that is efficient, secure and long-lasting,
- a high output **monocrystalline** photovoltaic panel,
- a **personalised study** conducted by ECLATEC, making it possible to select the location, define the optimum photometry compliant with standards, as well as the energy sizing to maximise continuity of service.



Parks



Industrial estates



Car parks

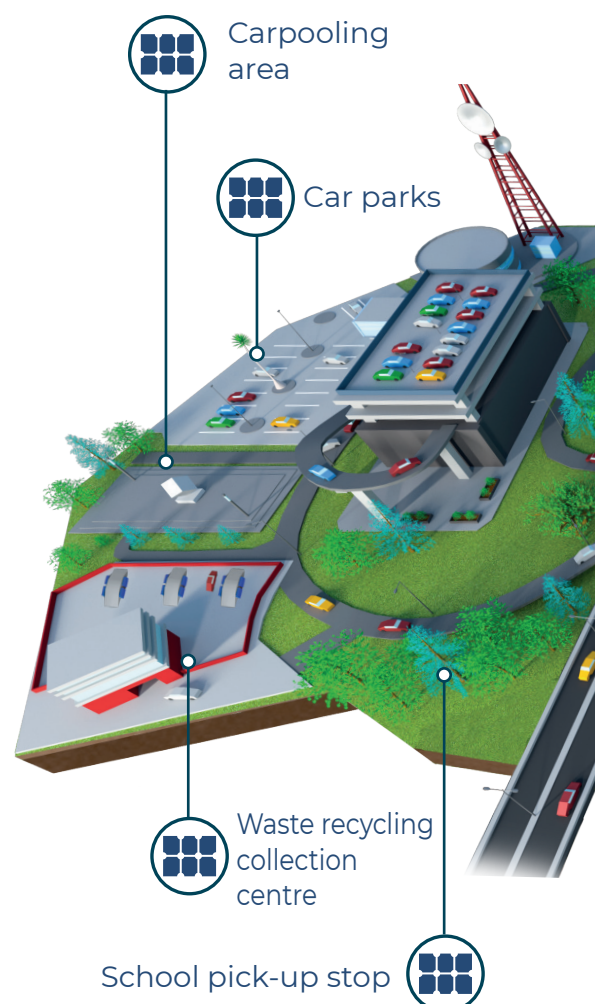
SUNPOLE C: STAND-ALONE SOLUTIONS FOR EVERY APPLICATION

The **Sunpole C** range stands out for its **adaptability** to the varied requirements of urban and rural environments.

Sunpole C can be adapted to all your applications thanks to its **modularity**:

- ▶ **Various sizes:** different heights available to perfectly adapt to your needs
- ▶ **Several colours available** to enhance your landscapes or blend in with your street furniture.
- ▶ **Tailored combinations:** compatible with multiple luminaires to meet the specific needs of every project
- ▶ **STRIUM finish available**

Every detail has been thought through to make sure your installation meets your needs while providing optimum lighting performance.





Effective

- ECLATEC LED solutions



Smart

- connected stand-alone lighting



Aesthetic

- ECLATEC LED luminaires



Respect for biodiversity

- Tunable White solutions



Plug & play

- Settings and functional tests carried out by ECLATEC



SUNPOLE C

Elegant, functional architecture

Removable cartridge

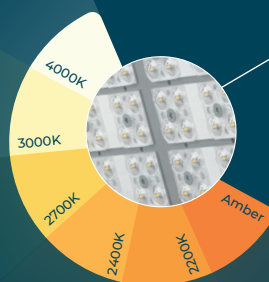
- Battery compartment
- Electronic compartment
- Easy access & maintenance
- Locking screws
- IP 66 protection rating

GHM ECLATEC range luminaires

Tweet Neo S1

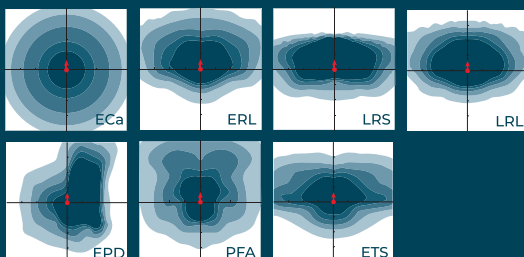
- Die-cast aluminium
- IK 10, IP 66
- Side mount
- Pre-set 2° pitch
- In accordance with the French "Light pollution" decree of 27 December 2018

High performance LED with Tunable White solutions



Photometric distributions ECLATEC *

- Optimised and adapted to the different uses (illuminance, luminance, projection, asymmetrical, symmetrical, ...)



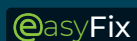
* Partial list of distributions

Smart

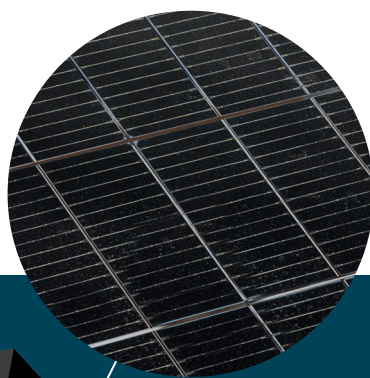


- Night-time dimming at set times and/or according to the ephemeris
- Detections
- Dynamic lighting
- Remote management

Delivery & installation



- Factory tested and programmed
- Optimised packaging
- User-friendly assembly
- Quick commissioning



Photovoltaic panel

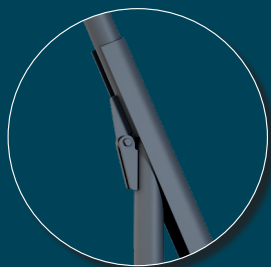
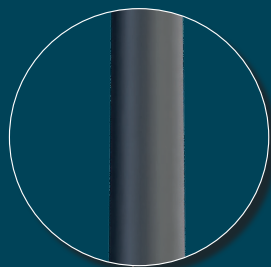
- 440 Wc
- 360° directional
- Fixed 20° pitch

Directional
360°

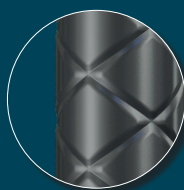
Overall configurations

Cylindrical-
conical pole

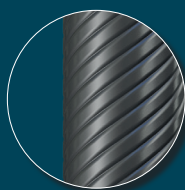
Tilting
pole



• STRIUM personalisation as an option



Capitan



Helix



Single light
solution

Single light
and pedestrian
light solution

Twin light
solutions

SUNPOLE C

Design: ECLATEC

Technical specifications



TWEET NEO S1 LUMINAIRE

► DESCRIPTION

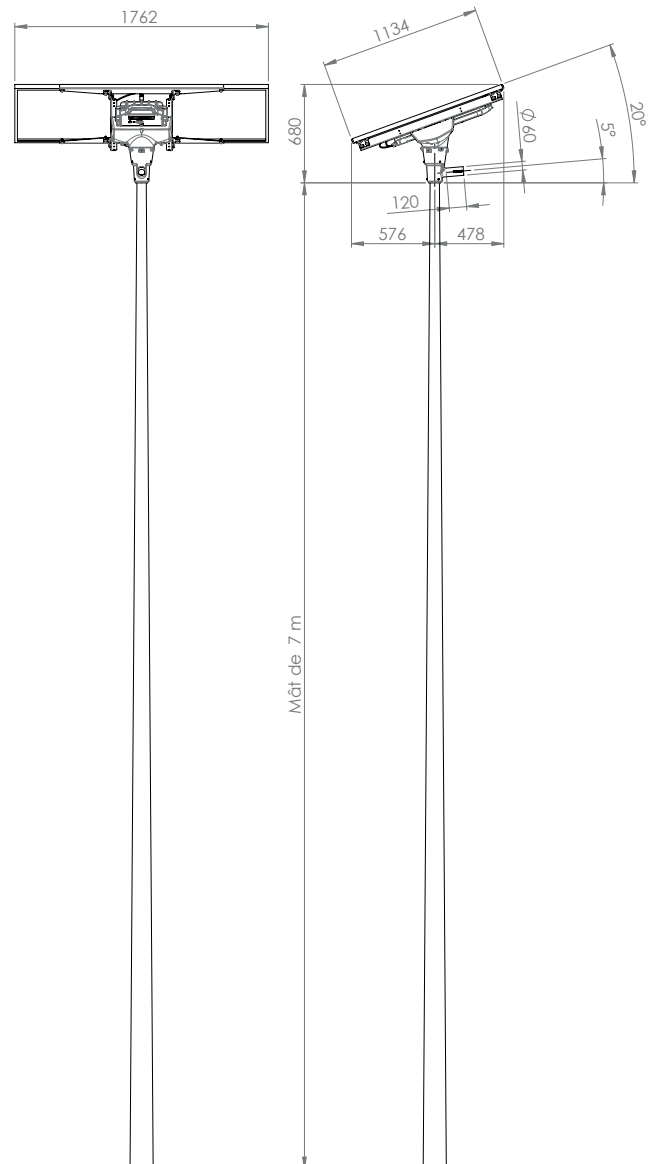
Luminaire body	Die-cast aluminium body
Bowl	Screen-printed polycarbonate
Finish	Polyester powder coating, choice of colours
Shock resistance	IK 10
Leak tightness	IP 66 as per the EN 60 529 standard Extruded silicone seal Securely fastened cable gland Luminaire 'breathes' through an active carbon filter
Dimensions (L x W x H)	572 x 320 x 92 mm
Weight	4 kg
SCx	0.05 m ²
Electrical rating	Class III
Maintenance	Access to the LED sources and smart components after removing the bowl fixed using 4 captive screws (safety line)

► SOURCES & PHOTOMETRIC DISTRIBUTIONS

Sources	BLS 12 strips
Colour temperatures	Amber*, 2200 K, 2400 K, 2700 K, 3000K 4000 K
Specific optics	QUADRALENS ERS, ERE, ERL, ECa, LRL, LRS, ETS, PFA, EPD, EPG
Tunable White	1 PCB mix, with 2 BLS 12, 1800K to 4000K amber
Barn Door	Medium or high as an option

*Approx. 1800K **E/L/P**: Illuminance/Luminance/Projection, **R/C/T/F/P**: Road/Circular/Pavement/Beam/
Pedestrian crossing, **E/S/L/A/D/G**: Narrow/Standard/Wide/ Asymmetrical/Right/Left

HARD WIRED



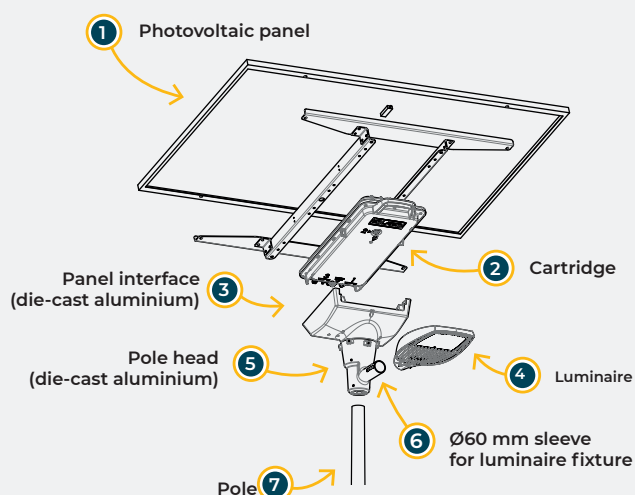
INSTALLATION

Removable battery cartridge with locking screw
The "panel + battery" assembly is 360° directional
(2 die-cast aluminium parts)



DESCRIPTION

► PHOTOVOLTAIC LIGHTING COLUMN FEATURING:



► MONOCRYSTALLINE PANEL

Rated power	440 Wc
Performance	22%
Dimensions	1762 x 1134 mm
Surface area	2 m ²
Pitch	20°
Orientation	360°
Service life	> 25 years (85% of the rated power after 25 years)
Recycling	SOREN Organisation

► BATTERY

Technology	Lithium Iron Phosphate. ECLATEC development
Capacity	F6: 614 Wh F12: 1228 Wh
Location	Removable cartridge built into the back of the panel
Operating temperatures	Discharge: -20 °C to +50 °C Charge: +0 °C to +45 °C
Service life	20 years (7000 cycles at 50%) DoD/25°C)
Recycling	COREPILE Eco organisation

► SMART BATTERY MANAGEMENT

MPPT	MPPT ultra-fast charge controller built into the cartridge. It makes it possible to control the panel voltage and intensity to optimise the battery charge
BMS module	Electric and thermal battery cell protection
Service life	MPPT: > 20 years

► SUPPORT

Pole	Cylindrical-conical powder coated galvanised steel pole, without inspection hatch STRIUM option: Capitan or Helix design
Height	4 to 10 m
Wind zones	Zones 1 to 4 (22, 24, 26 and 28 m/s)
Certification	EN 40
Base	400 x 400mm, Centre to centre spacing 300 x 300mm, J18 sealing
Service life	> 30 years
Indicative block dimensions *	4 m: 0.6 ² x 0.8 m 5 m: 0.6 ² x 0.9 m 6 m: 0.7 ² x 1 m 7 m: 0.8 ² x 1.1 m 8 m: 0.9 ² x 1.1 m 10m: 0.9 ² x 1.2 m

* These dimensions are given for information only and ECLATEC accepts no liability. The block and its reinforcements must be sized by a civil engineering design office.

SMART

SUNPOLE C units have a range of programming and features for all uses, providing comfort and safety while protecting biodiversity.

1 TUNABLE WHITE

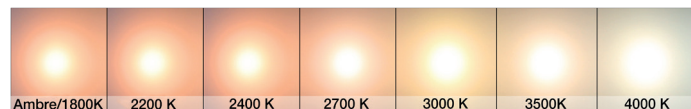


3000K

Amber / 1800 K

The Tunable White solutions make it possible to vary the luminaire's colour temperature at night to share the space between Man and nature. They provide users quality, comfortable and safe lighting, while taking into account the challenges of protecting biodiversity and limiting light pollution.

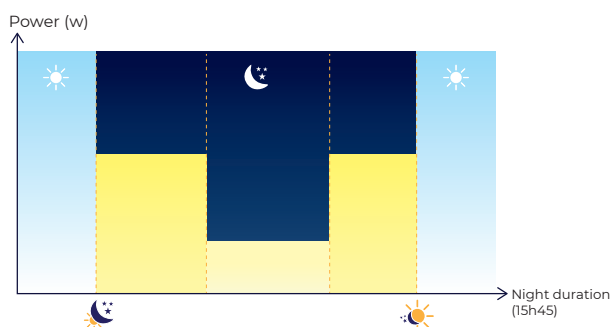
All the night-time profiles and set-time configurations below are compatible with Tunable White solutions.



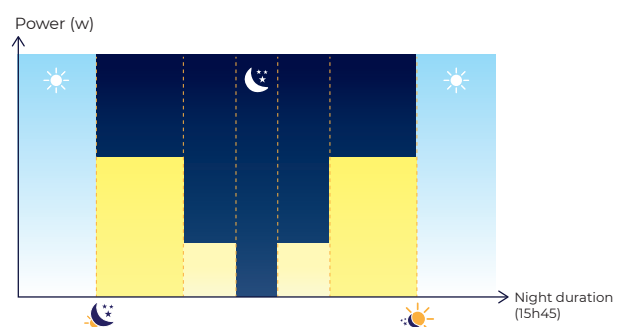
2 NIGHT-TIME DIMMING

The dimming functions make it possible to define up to 3 time slots with different powers depending on the ephemeris or at set times. A lights out slot can also be configured.

Dimming at set times



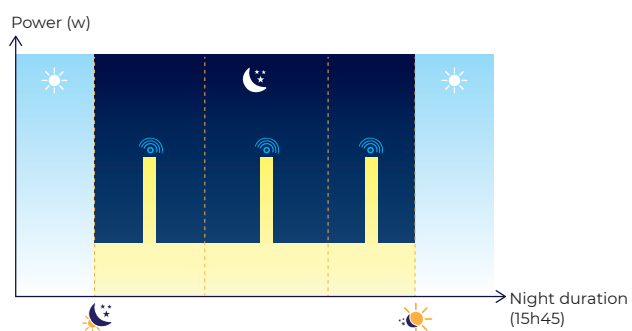
Dimming and lights out at set times



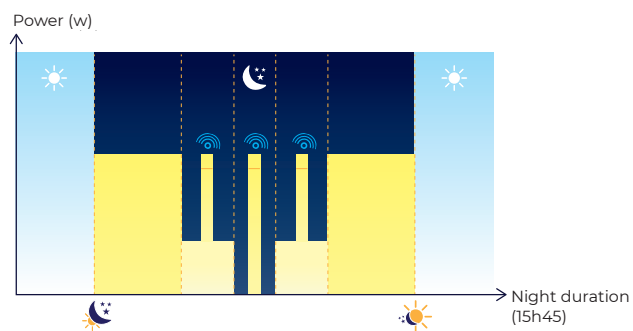
► Dimming with the option of partial or total lights out at set times throughout the year and/or according to the ephemeris.



3 DETECTION



- Low level lighting or lights out when nothing is detected



- Dimming with the option of partial or total lights out at set times throughout the year and/or according to the ephemeris.
- Adjustable high power level during detection
- Adjustable detector operating times

4 SET POWER

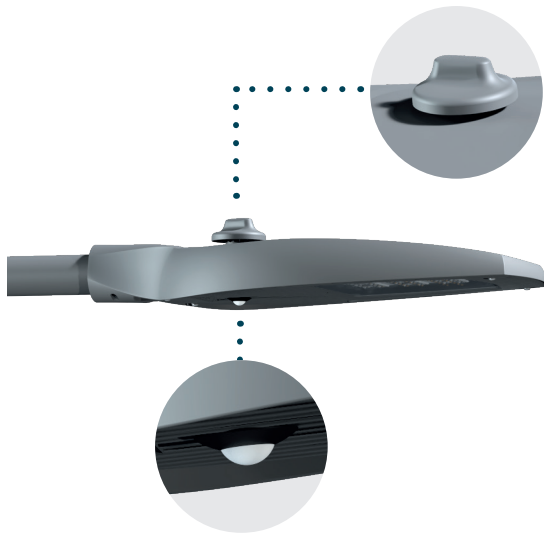
The luminaire is switched on at the same power throughout the night, according to the ephemeris or at set times.

SUNPOLE C

Smart stand-alone lighting with WIZARD

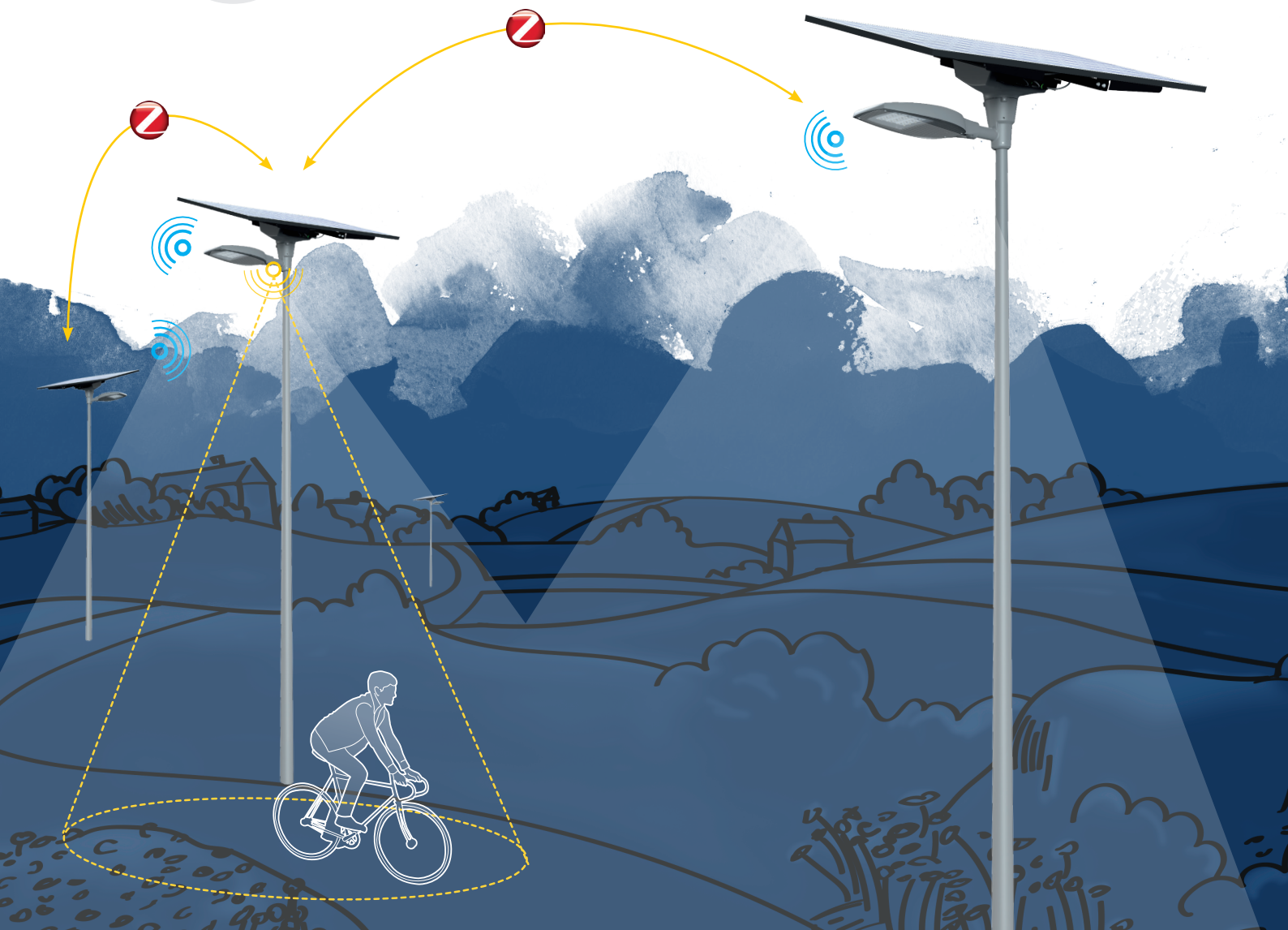
► DYNAMIC LIGHTING

Communicating detection is used to increase the power of a group of luminaires when pedestrians, cyclists and the like are detected at moderate speed.



The luminaires communicate with each other using a ZigBee mesh wireless radio frequency protocol using Zhaga WIZARD antennas.

Different lighting configurations, dimming slots and power levels can be set up to provide optimum comfort levels that can be compared to a "light wave", and that also optimise energy consumption.



► WIZARD REMOTE MANAGEMENT

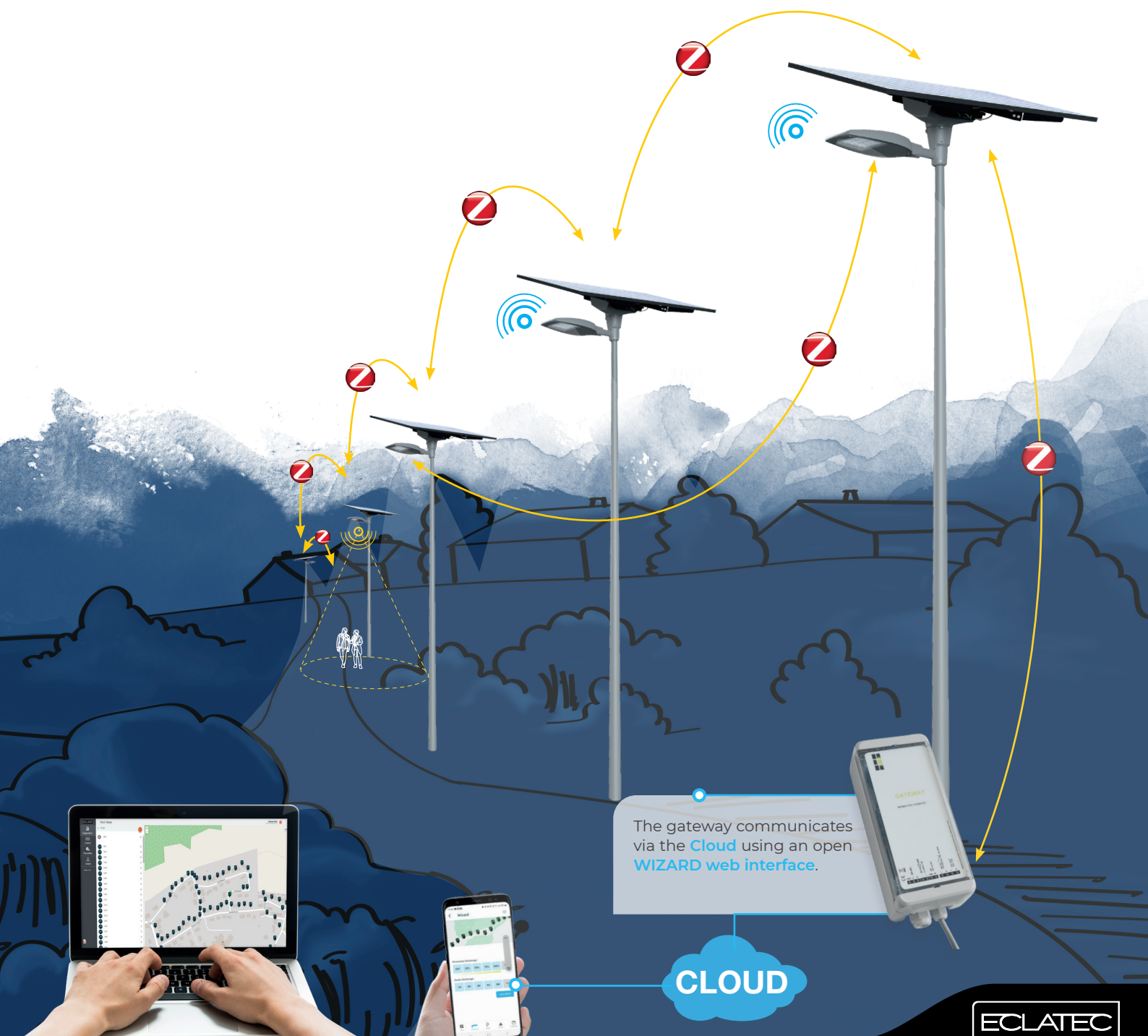
WIZARD remote management is used to remotely manage all your solar lighting assets. This solution's two-way communication makes it possible to:

- Configure and control the lighting network in real time: lighting times, power levels, dynamic lighting, lights out, etc.
- Have information on potential faults and power consumption in particular

The WIZARD remote management system uses open and standardised technology. The luminaires fitted with a Zhaga WIZARD antenna communicate with each other and with a gateway using the ZigBee wireless protocol.

The gateway, which is the only element connected to the Internet using a SIM card, communicates with the Cloud using a secure web interface available on computers and tablets.

The WIZARD application, available on tablets and IOS and Android smartphones, can be used to control installations and display information depending on user accreditation levels.



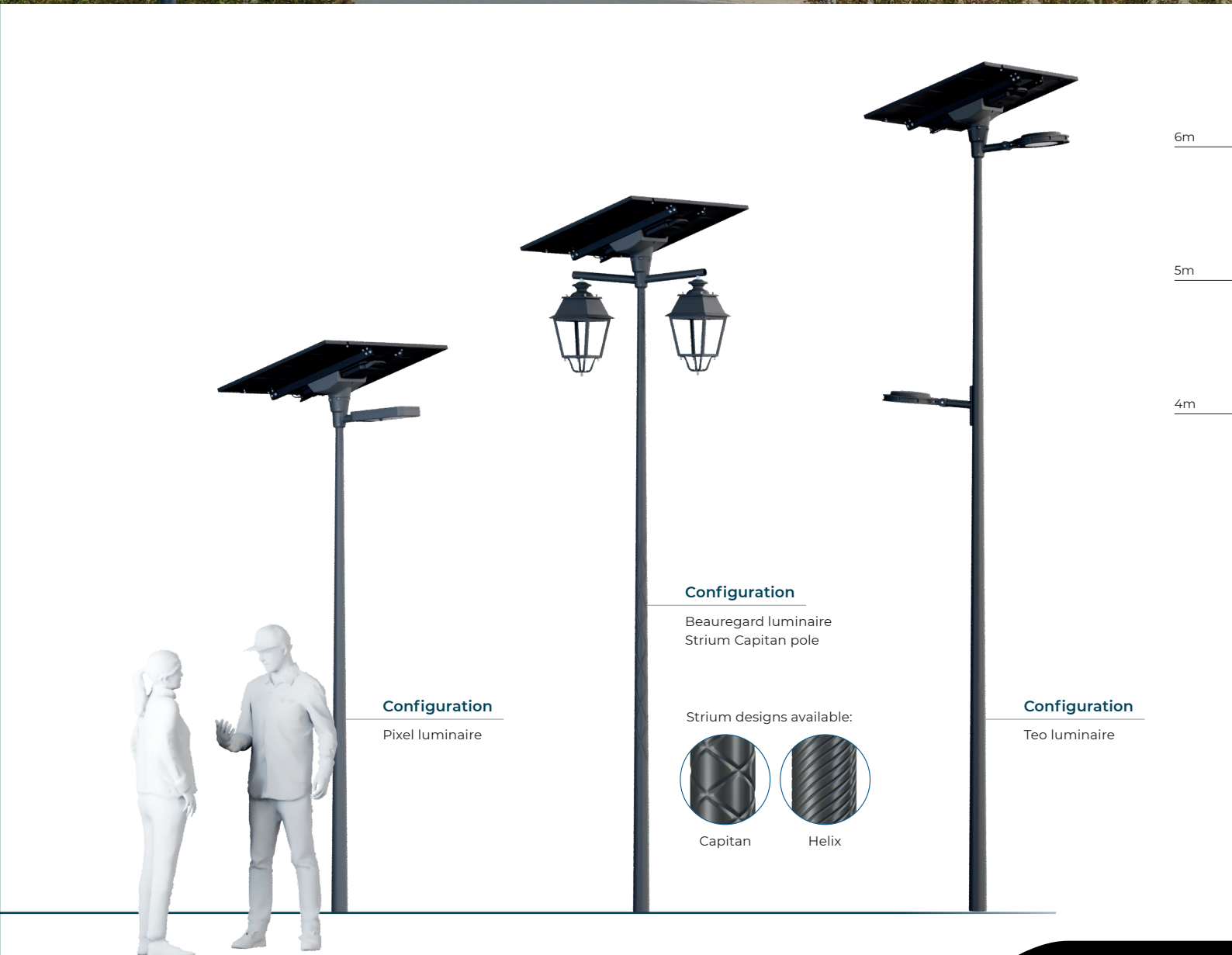
PARKS & GARDENS, TRANSPORT & SOFT MOBILITY





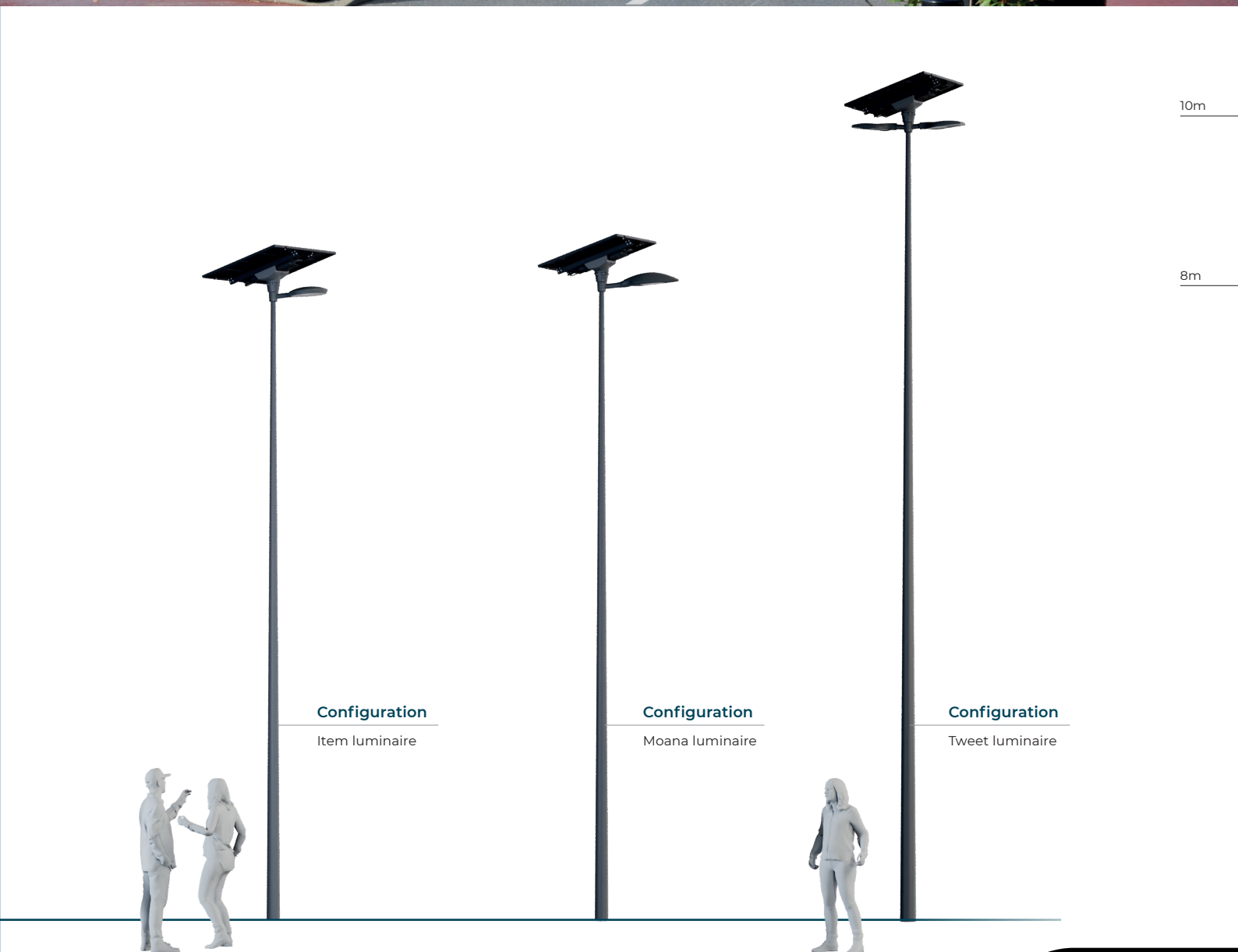
RESIDENTIAL AREA & TOWN CENTRE



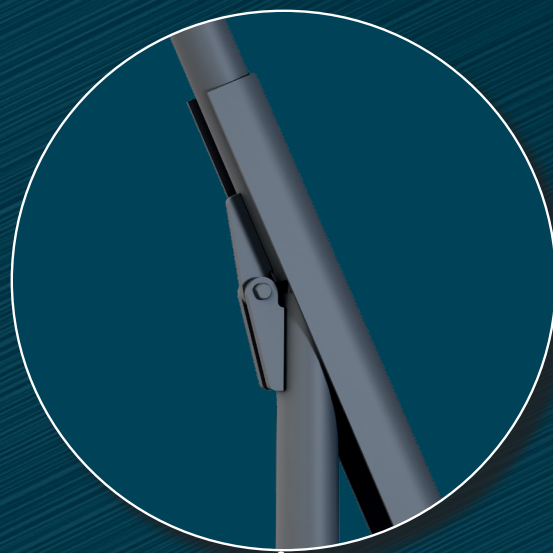


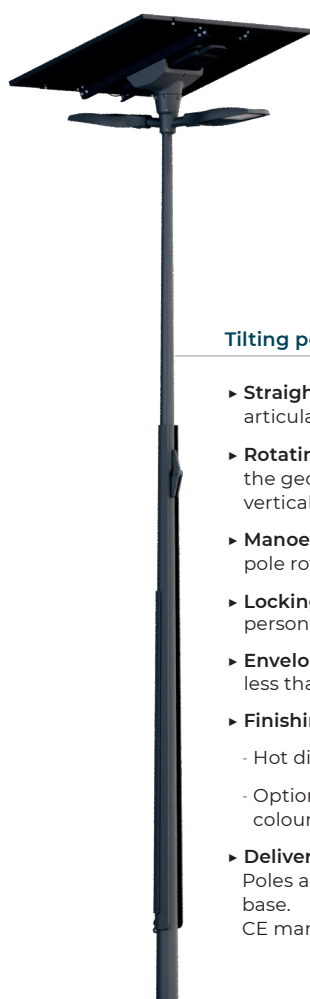
ROAD, CAR PARK & TERTIARY





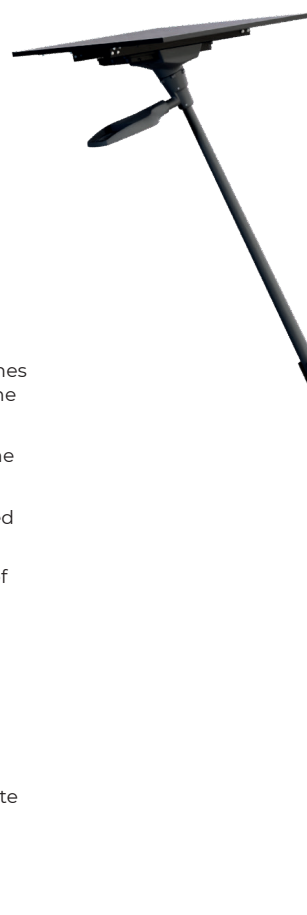
TILTING POLE





Tilting pole mast

- **Straight "cut" cylindrical-conical steel pole** 5 m with articulated joint for standing access to the equipment.
- **Rotating part fitted with an enveloping shell** that matches the geometry of the static part to limit visual impact in the vertical position.
- **Manoeuvring cable (with shackle included)** to control the pole rotation.
- **Locking system** limiting access to the tilting to authorised personnel.
- **Enveloping shell sized** to guarantee an operating force of less than 20 kg.
- **Finishing:**
 - Hot dip galvanising as per the **NF EN ISO 1461** standard.
 - Optional: thermosetting polyester powder coating (RAL colour).
- **Delivery:**
Poles assembled and ready to install on a suitable concrete base.
CE marking as per the **EN 40** standard.



5.5m

ECLATEC, A WINNING PARTNERSHIP!

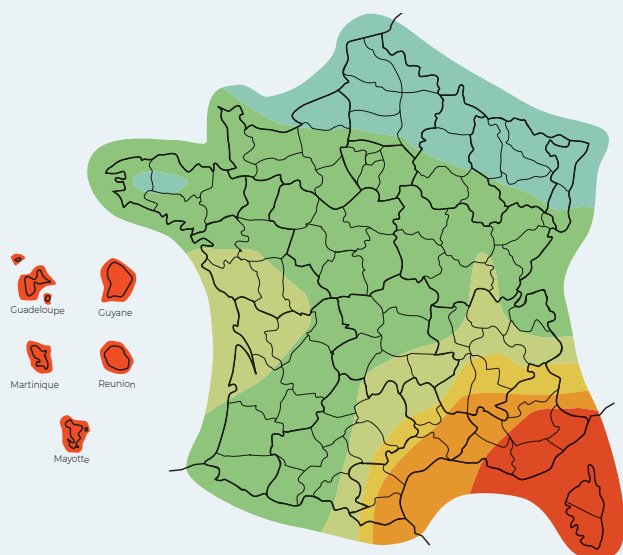


Because your project
is unique

1 Photometric requirements:

- ▶ Zone / surface area to be lit
- ▶ Compliance with applicable standards
- ▶ Definition of the appropriate power and photometric distribution

2 Available solar energy:



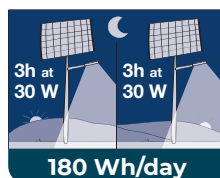
The amount of energy typically produced by panels varies depending on the region in which they are located.

3 Following a study, your project sizing is implemented

Light right: what is needed, when it's needed, for as much as is needed!

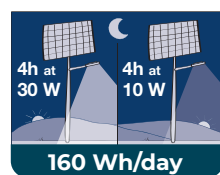
The intelligence embedded in our stand-alone solution is designed to provide continuity of lighting service while maximising lighting efficiency when necessary, thereby minimising light pollution and its impact on biodiversity.

For example:



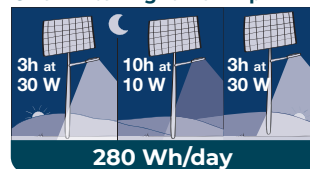
Constant 30 W lighting for 3 hours in the evening and 3 hours in the morning will require the following energy:
 $30 \times (3+3) = 180 \text{ Wh/d.}$

✦ **Dimming option**



30 W lighting for 4 h and then 10 W for 4 h will require the following energy:
 $(30 \times 4) + (10 \times 4) = 160 \text{ Wh/d.}$

✦ **One winter night from 4pm**



30 W lighting for 3 hours and then 10 W for 10 hours and 30 W for 3 hours, will require the following energy:
 $(30 \times 3) + (10 \times 10) + (30 \times 3) = 280 \text{ Wh/d.}$

Responsible design

ECLATEC's strong societal values include the notions of eco-design and circularity in its product development cycle.

Our research teams select high quality technical components for all our solutions.

ECLATEC

French leader in public lighting

23



ECLATEC is a **Designer-Manufacturer** of lighting solutions based in Nancy since 1927.

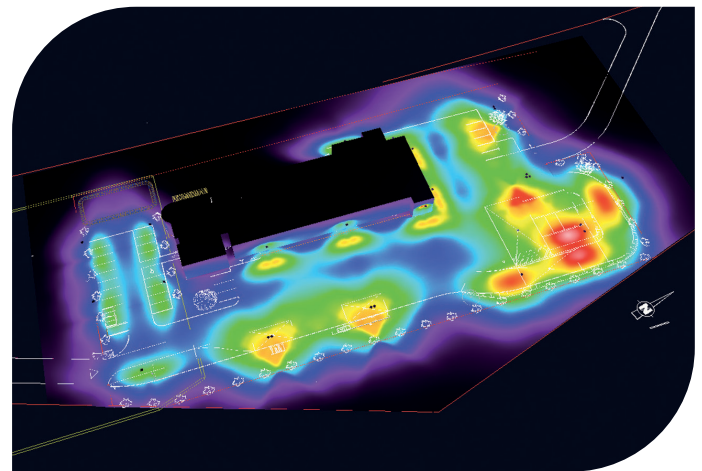
We offer a wide range of LED luminaires and smart solutions. Whether stand-alone or connected to a grid, they are designed to fulfil every photometric need.

Our values and technical expertise are at the service of your projects. We therefore define a lighting solution adapted to the uses and configuration of the surface areas to be lit.

“To light properly”, is ECLATEC's permanent objective for the design of its lighting solutions.

Energy savings, compliance with standards and adapted lighting levels all require high quality equipment and solutions.

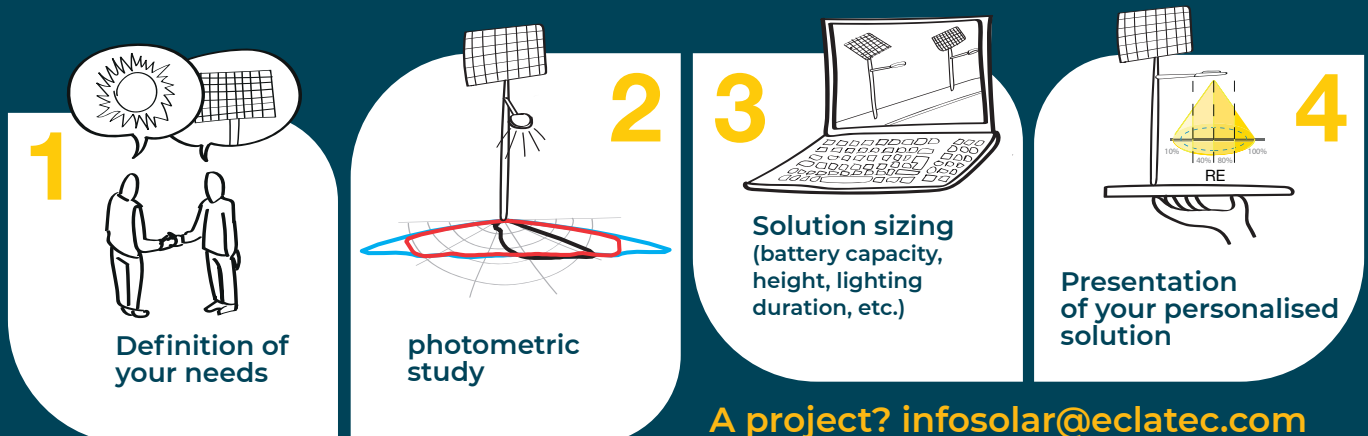
The careful study of their implementation conditions is an important source of energy optimisation: in every case, ECLATEC's Lighting Consultancy department recommends the best lighting solution, the best spacing, the best power or the best settings.



False colour rendering of a photometric study

A personalised study

ECLATEC supports and advises decision-makers on their projects by following these 4 principles:



A project? infosolar@eclatec.com

ECLATEC

41 rue Lafayette, CS 20069 Maxéville
54528 Laxou cedex, France
Phone: +33 (0)3 83 39 38 00
www.eclatec.com



Reproduction, distribution, sale or use without the prior written permission of ECLATEC - Copyright ECLATEC - Document and photos not constituting a binding contract. The use of the appliances and the measurements given are only an indication and cannot be construed as a binding contract. The company reserves the right to make any changes it seems fit without prior notice. Service Communication: ECLATEC - 41 rue Lafayette, CS 20069 Maxéville, France. ©Eclatec - ©Stock

Edition
09/2025