

PRIORILED



ELIPT



TSANA



INDICE



INDICE CONIC



ECLATEC



PRIORILED

The LED solution **PRIORILED** from ECLATEC enhances safety around protected crossings; indeed, at night, the double contrast of an increased luminous flux and a sharp colour temperature clearly delineates the pedestrian crossings.

By doing so, the system **PRIORILED** applies LED technology to the well-proven principles of the luminaires **PRIORITEC** and **ELIPTEC**, which themselves use conventional light sources.

Two versions exist (beam offset to the right or to the left), depending on the luminaire's position relative to the pedestrian crossing. Finally, the module **PRIORILED** is built on the **ORALED**; it therefore remains interchangeable and upgradable.

The solution **PRIORILED** is associated with the luminaires **ELIPT**, **TSANA**, **INDICE** and **INDICE CONIC**.



PRIORILED MODULE





ELIPT 55



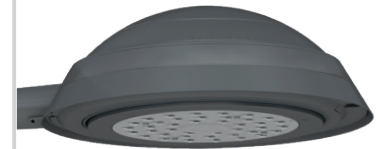
TSANA 55



INDICE 620



INDICE CONIC



DESCRIPTION

- Die-cast aluminium body
- Polyester powder coating finish, choice of colours
- IP 66
- Prioriled module equipped with a single lens **ORALENS**
- Colour temperatures: 3000 K or 6500 K
- IK 08
- Class I or II

LEAK TIGHTNESS

- IP 66 as per the EN 60 529 standard
- Extruded pneumatic silicone seal
- Anchored cable gland
- Ventilation of the luminaire via an activated carbon filter

CITIZEN FEATURES

- Material assessment: Aluminium 86%, Steel 4%, Polymers 3%, Other 7%
- Compliant with the European RoHS directive
- High level of recyclability

COMPLIANCE WITH THE 'LIMITATION OF LIGHT POLLUTION' ORDER OF 27 DECEMBER 2018 [outside specific restriction zones]:

All versions of the Prioriled Elipt:

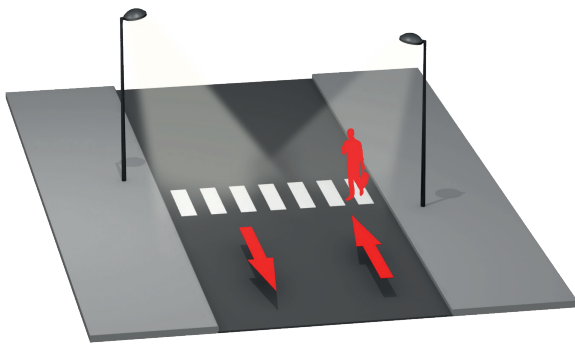
- ULR of the luminaire at 0° tilt: 0%
- Maximum luminaire tilt allowing a ULR < 4%: 20°
Possibility of a tilt greater than 20° depending on the choice of lens, upon request
- CIE Flux Code No. 3: greater than 95%
- Colour temperatures: 3000 K; others on request (lead times)
- Surface density determined by the ECLATEC design office after project data analysis
- Light trespass:
 - installation recommendations making it possible to define light trespass
- Supply of all mandatory information required by the manager using a flashcode

		PRIORILED ELIPT
Application	Pedestrian crossings	
Recommended height:	3.5 to 5 m	
Mounting	Top and side	
Dimensions	Dia. Height	555 mm 215 mm
Weight	13.7 kg	
SCx	0.09 m ²	
Source	PRIORILED	
Maintenance	Removable PRIORILED module	
Specific optics	ORALENS: EPD or EPG	

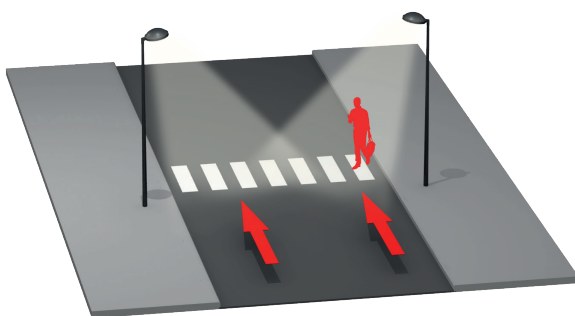
Key:
EPD: Right Pedestrian Crossing Illuminance, **EPG:** Left Pedestrian Crossing Illuminance

PEDESTRIAN CROSSING ILLUMINANCE

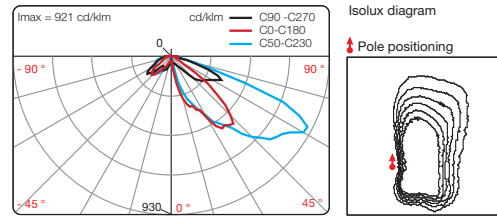
- **EPD:** Right Pedestrian Crossing Illuminance
 Luminaire positioned upstream of the pedestrian crossing, in the direction of traffic, for a two-way road.



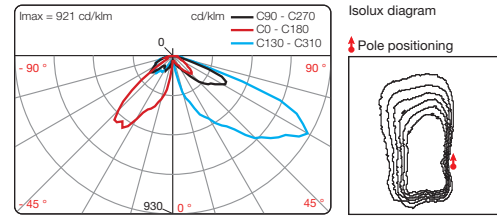
- **EPG:** Left Pedestrian Crossing Illuminance
 Luminaire placed in addition to EPD, upstream of the pedestrian crossing, for wide one-way roads.



PRIORILED EPD



PRIORILED EPG



MECHANICAL INTERFACES

- **LRL:** Elipt lateral smooth ball joint with sleeve for mast arm end Ø 60 mm external
- **LR** Elipt lateral ball and socket with Ø 27 PDG nipple for female boss welded to the pole or mast arm
- **Top or bitop:** cap for pole Ø 60 / 62 mm. For standard Ø 76 mm pole, end A optional. Luminaire inclined at 0° and 10°
- **LL:** Elipt lateral with sleeve for arm end Ø 60 mm external
- Elipt on **Mounting pad** in die-cast aluminium
- Elipt on a **Wall-mounted luminaire** in die-cast aluminium
- **SR:** Elipt Suspended Ball Joint



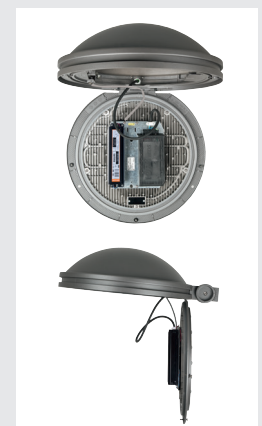
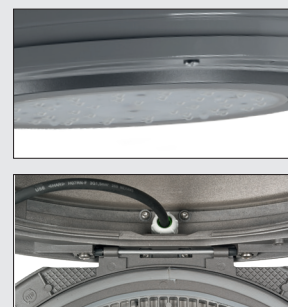
CONFIGURATION

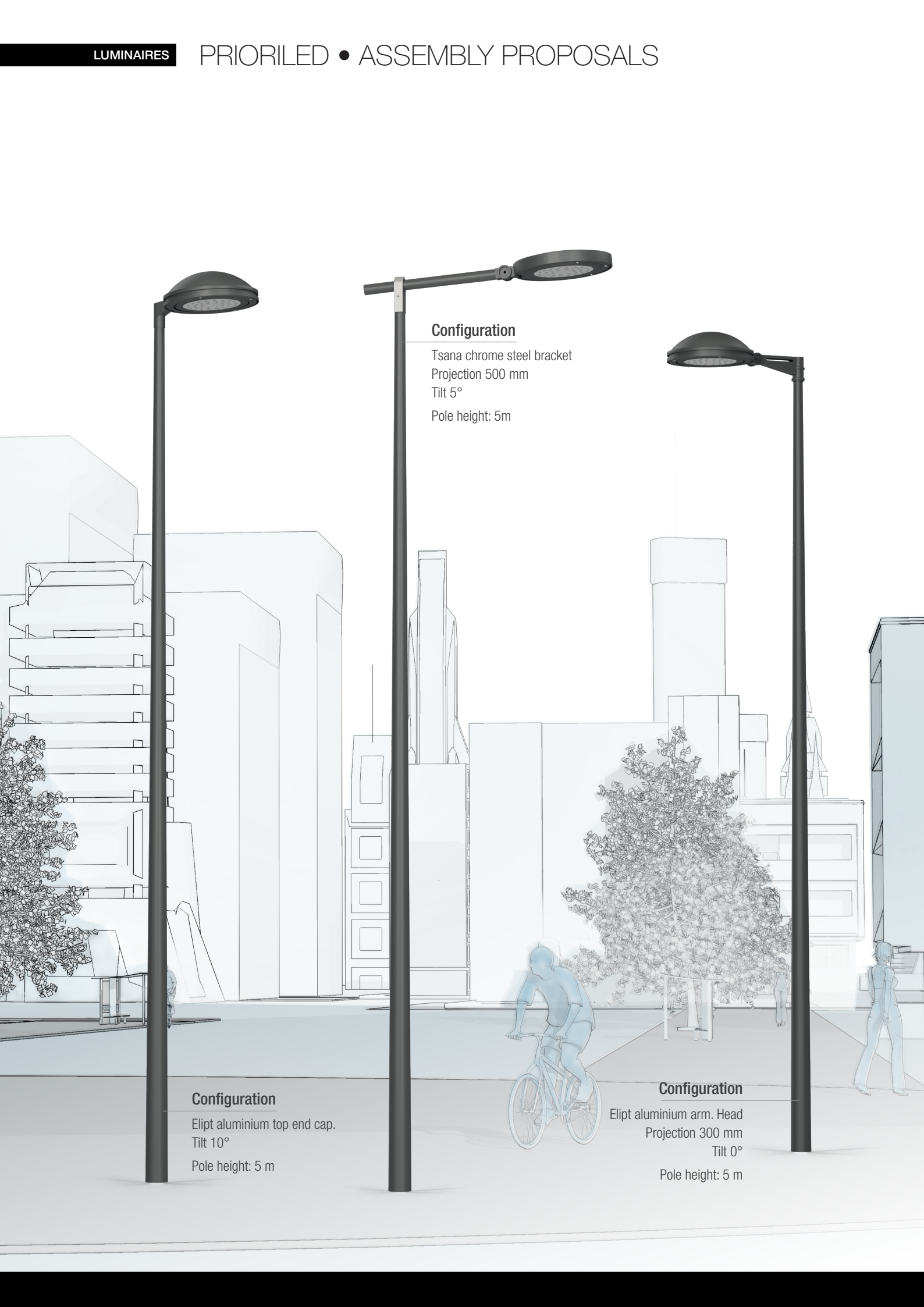
Opening and Closure

Luminaire opening by 3 quarter-turn screws
 The Prioriled module tilts around an aluminium hinge

Prioriled maintenance

Direct access to the Prioriled module. Power supply via quick connectors
 Removable Prioriled module





Configuration

Tsana chrome steel bracket
Projection 500 mm
Tilt 5°
Pole height: 5m

Configuration

Elipt aluminium top end cap.
Tilt 10°
Pole height: 5 m

Configuration

Elipt aluminium arm. Head
Projection 300 mm
Tilt 0°
Pole height: 5 m



ECLATEC

41 rue Lafayette, CS 20069 Maxéville
54528 Laxou cedex, France
Phone: +33 (0)3 83 39 38 00
www.eclatec.com



Edition
07/2019

