



PIXEL

SPECIFICATIONS

RoHS ZD⁺ IP 66 IK 10

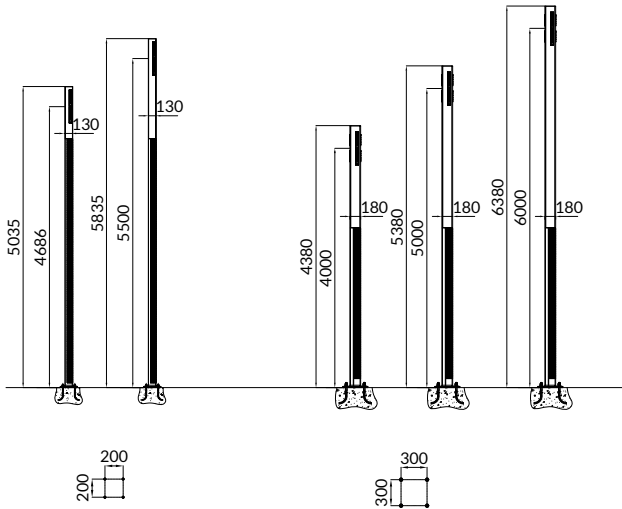
PRODUCT NAME	PIXEL COLUMN
HOUSING	Painted, metallised cast iron lighting column and painted, galvanised steel extension
FINISH	Polyester powder coating, any colour available
SOURCES	IXEA module
COLOUR TEMPERATURE	Amber*, 2200 K, 2400 K, 2700 K, 3000 K and 4000 K
OPTICAL	IXEA single lens
FLUX & POWER**	Up to 5834lm; 33W
ELECTRICAL CLASS	Class I or II

*Approx. 1800K
**At 3000K, in accordance with performance standards IEC 62717 and IEC 62722 (+/-5%tolerance)

PIXEL RANGE

Lighting column

Lighting column in painted metallic cast iron with painted galvanised steel extension.
Column equipment depending on lighting study

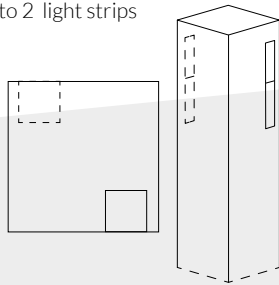




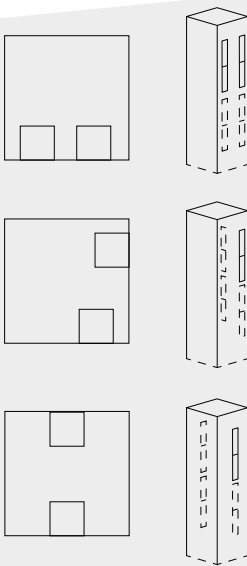
IXEA MODULE LAYOUT



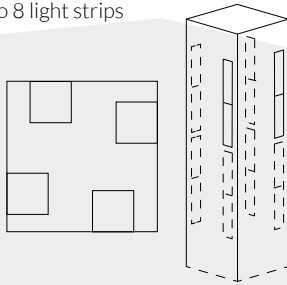
Up to 2 light strips



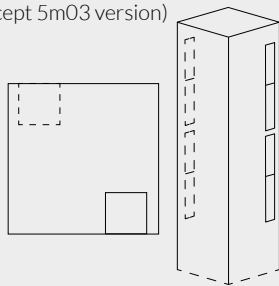
Up to 4 light strips



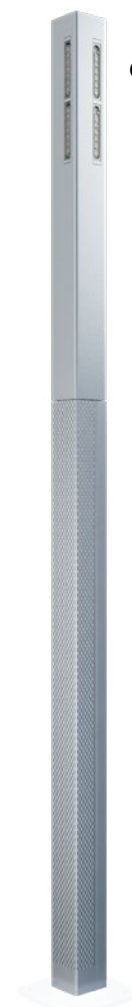
Up to 8 light strips



Up to 4 light strips
(except 5m03 version)



PIXEL



GM



PM