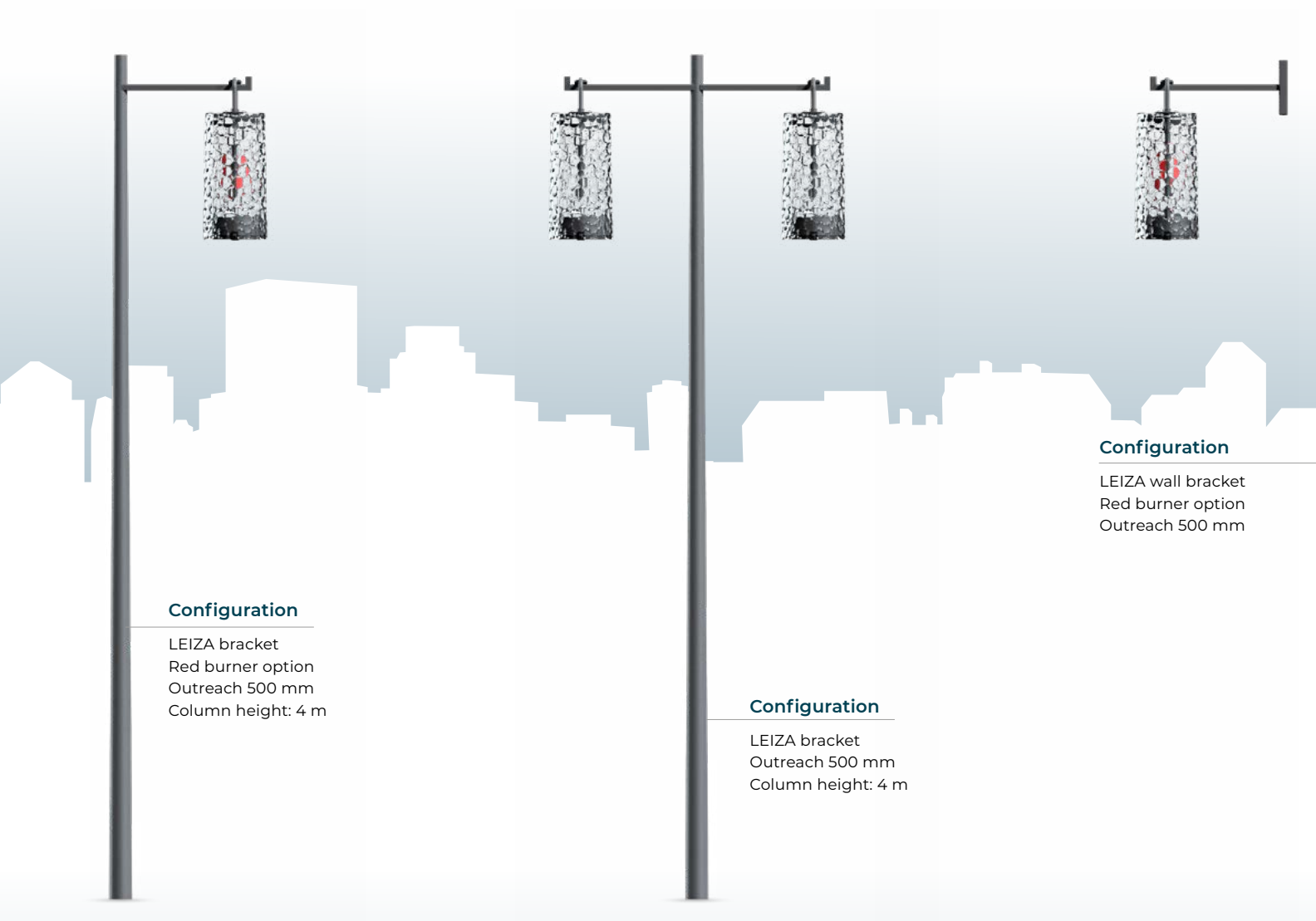


LEIZA

Design: Christophe CANADELL





Configuration

LEIZA bracket
Red burner option
Outreach 500 mm
Column height: 4 m

Configuration

LEIZA bracket
Outreach 500 mm
Column height: 4 m

Configuration

LEIZA wall bracket
Red burner option
Outreach 500 mm

LEIZA

Design: Christophe CANADELL



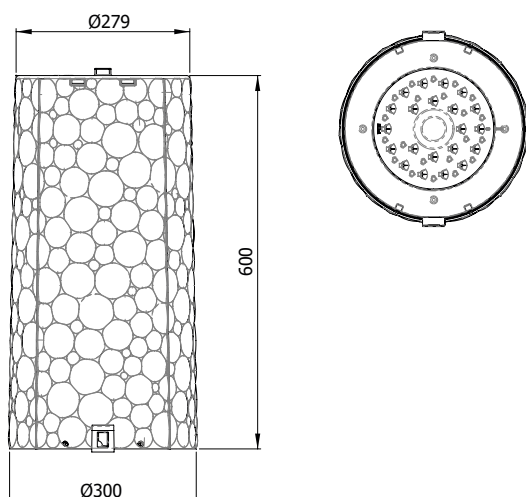
LEIZA

With its dedicated bracket and red burner option

DESCRIPTION

Product name	LEIZA
Housing	Injection die cast aluminium LEIZA module
Bowl	Structured in clear polycarbonate
Finish	Polyester powder coating, any colour available
Impact protection	IK 08
Ingress Protection	IP66 Extruded silicone gasket
Dimensions (dia x h)	300 x 600 mm
Weight	7.9kg
Windage area	0.14m ²
Materials used	Plastic 46 % Aluminium 22 % Steel 18 % Other 14 %
Electrical class	Class I or II
Wiring	Luminaire pre-wired in the factory

DIMENSIONS



LEIZA
Presented on a wall mount



SOURCES & PHOTOMETRIC DISTRIBUTIONS

LEIZA

Sources	LEIZA (INDEX type)
	LEIZA backlight
Colour temperature	LEIZA: 3000 K or 4000 K, other on request LEIZA backlight: 3000 K, other on request
Optical Distribution	ORALENS: ECL, ERS, ERL
Power supply current	Adjustable up to 700 mA ⁽¹⁾

⁽¹⁾ >700mA possible on request

E/L/P: Lighting/Luminance/Projection, **R/C/T/F/P:** Road/Circular/Pavement/Beam/Zebra crossing,
E/S/L/A/D/G: Narrow/Standard/Wide/Asymmetrical/Right/Left



LEIZA module
(INDEX type)

OPTIONS

LEIZA

At the lighting point

Adjustable current (driver or bottom of the pole)	✓
Dimming (driver, bottom of the pole or Bluetooth)	✓
Built-in detection	-
Remote detection	✓
DALI protocol	✓
Smart-Ready® configuration (ZD4i)	✓

In a local network

Communicating detection with pilot wire	✓
Wireless communication sensing	✓

Remote management

WIZARD CMS system	✓
-------------------	---

Details of the functions available on pages 272 to 279 and in the LED synopsis located on under the flap on the front cover

MECHANICAL INTERFACES

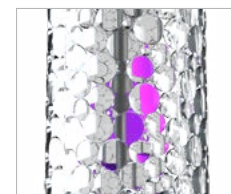
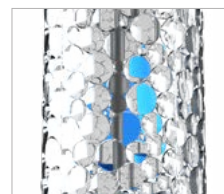
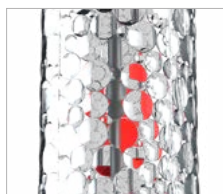


LEIZA wall fitting with painted, galvanised steel suspension hook, choice of colours



LEIZA dedicated bracket

DECORATIVE OPTION



"Red burner" effect with red PMMA accessory, other colours on request

MAINTENANCE

Opening and closing

Module removed using the two tabs located at the bottom of the bowl.
The module is held by a safety wire.

LED module maintenance

Quick electrical disconnection without tools.
Module LED amovable.