

# ENZO

Design: ECLATEC



ECLATEC





# ENZO

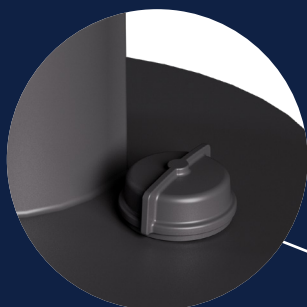
Design: ECLATEC

3

“Transform the  
spaces to create  
emotion”

# ENZO

A functional range that creates ambience



## SMART ZD4™

- ZD4i
- Bluetooth
- DALI - DMX
- Remote management



## Colourful atmospheres

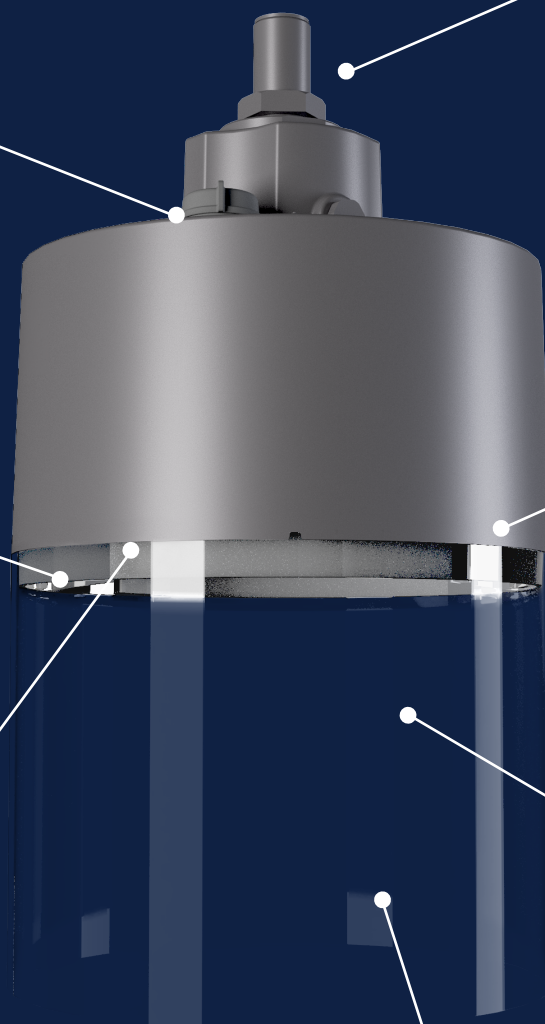
- RGBW



## Refined finishes

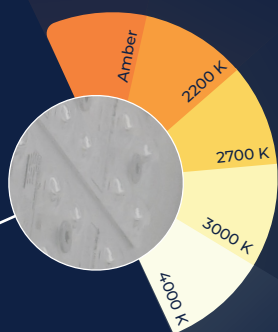
- Clean aesthetic, without discontinuity

## Customisable pattern



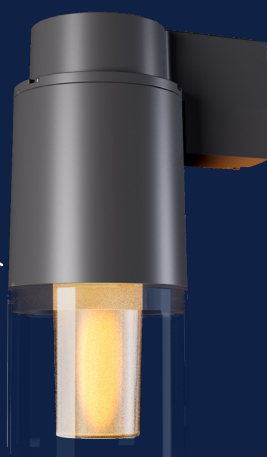
## Various combinations of installation

- Catenary
- Suspended SM27 PDG
- Pole-top and wall-mounted



## High-performance LED

- Tunable White



A candle effect



# Inspirations

---

“Walking is a  
different way  
of inhabiting  
the world.”

*Sylvain Tesson*

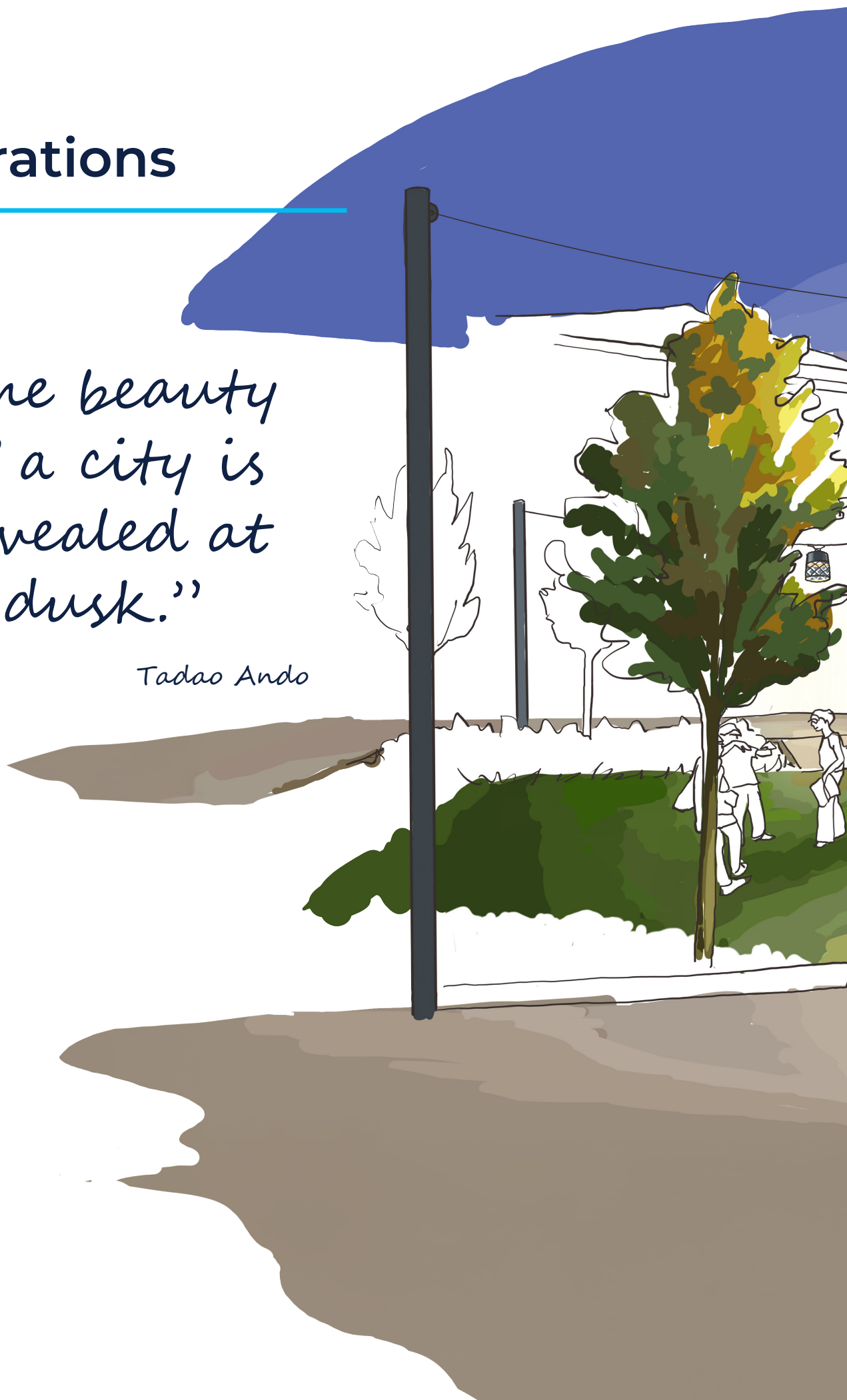




# Inspirations

*“The beauty  
of a city is  
revealed at  
dusk.”*

*Tadao Ando*

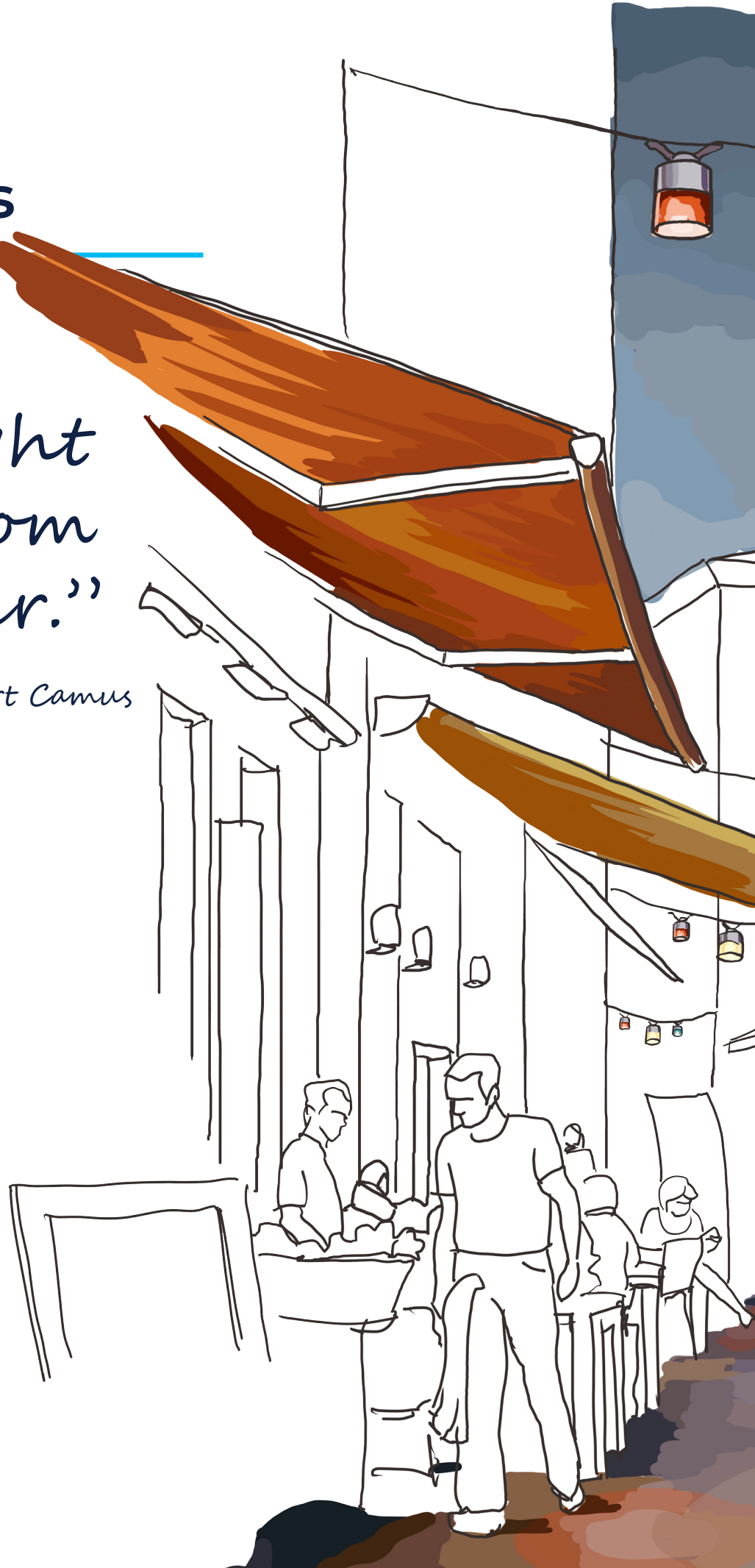




# Inspirations

“True light  
comes from  
encounter.”

*Albert Camus*





# Inspirations

---

“Water is the  
substance of  
light.”

*Gaston Bachelard*





# Resources

## Technical

ENZO 1



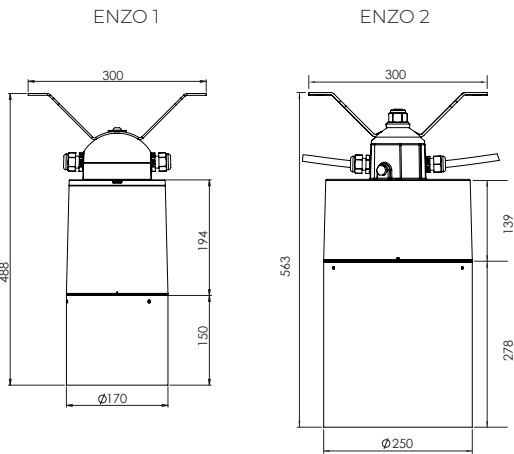
ENZO 2



### General description

Model	ENZO 1	ENZO 2
Luminaire body	Die-cast aluminium body	
Decorative motif	BULLE, VENGA, LIN or customisable on request	
Globe	PPS: Structured Flat Polycarbonate MHC: High-clarity Methacrylate with structured underside	
Finish	Polyester powder coating, choice of colours	
Shock resistance	IK 10	
Leak tightness	Leak tightness level IP 66 as per the EN 60 529 standard Extruded silicone seal Luminaire 'breathes' through an active carbon filter	
Dimensions (diam. x h) High globe without fixings	170 x 344 mm	250 x 417 mm
Weight	3.5 kg	5.7 kg
SCx	0.06 m <sup>2</sup>	0.1 m <sup>2</sup>
Material assessment	PEP (Product Environmental Profile) sheet available on request	
Electrical class	Class I or II	

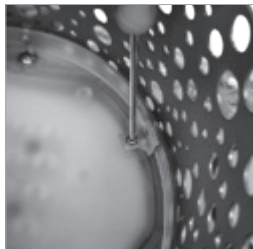
### Wired



## Maintenance

### Gear maintenance

Removal of the LED module from the lower part with 3 screws, safety cable  
Removable gear plate secured by 3 screws



## Sources & photometric distributions

	ENZO 1	ENZO 2
Sources	1 BLS 8 1 BLS RGBW <sup>(2)</sup> 1 BLS 8 and 1 BLS RGBW <sup>(2)</sup>	1 BLS 8, 2 BLS 8 or 24 LED AXEL 1 or 2 BLS RGBW <sup>(2)</sup> 1 BLS 8 and 1 BLS RGBW <sup>(2)</sup>
Colour temperature	Amber*, 2200 K, 2700 K, 3000 K or 4000 K	
Lenses and distributions	<b>QUADRALENS:</b> ERS, ERL, ECa, LRS, LRL, ERE, ETS, PFA, EPD, EPG	
Supply current	Adjustable up to 700 mA <sup>(1)</sup>	

\*Approximately 1800 K **(1)** I > 700 mA possible on request, **(2)** Colour to be defined according to its RGB code available online.

**E/L/P:** Lighting/Luminance/Projection, **R/C/T/F/P:** Road/Ring road/Pavement/Beam/Pedestrian crossing, **E/S/L/A/D/G:** Narrow/Standard/Wide/Asymmetrical/Right/Left,

## Mechanical interfaces



**CATENARY:** tiltable catenary mounting  $\pm 15^\circ$  on cables with a diameter of 6 to 14 mm



**SUSPENDED:** top nipple  $\varnothing 27$  PDG mounting for ENZO 2



**WALL LIGHT:** pole-top and wall-mounted for ENZO 1

## Smart

	ENZO 1	ENZO 2
<b>At the lighting point</b>		
Adjustable power supply current (driver or pole foot)	✓	✓
Dimming (driver, pole foot or Bluetooth)	✓	✓
DALI or DMX protocols	✓	✓
Smart-Ready® pre-fittings (ZD4i)	-	✓
<b>In a local network</b>		
Wired connected detection	✓	✓
Wireless communicating detection	✓	✓
<b>Remote management</b>		
Remote management WIZARD	-	✓

## Decorative pattern



BULLE pattern



VENGA pattern



LIN pattern



Customisable pattern option  
(subject to study)

### COMPLIANT WITH THE "LIGHT POLLUTION LIMITATION ORDER" OF 27 DECEMBER 2018 [except in specific restricted areas]:

All versions of the ENZO luminaire:

- ULR of the luminaire: less than 1%
- CIE Flux Code No. 3: greater than 95%
- Colour temperatures (BLS version: 2700 K to 3000 K)
- Surface density determined by the ECLATEC design office after project data analysis
- Light intrusion:
  - as an option, adjustable cut-off shields for LED sources
  - installation recommendations to define light intrusion
- Provision via flashcode of all mandatory information required by the manager









19



ECLATEC

# ECLATEC

41 rue Lafayette, CS 20069 Maxéville  
54528 Laxou cedex, France  
Phone: +33 (0)3 83 39 38 00  
[www.eclatec.com](http://www.eclatec.com)



ecosystem

Reproduction of this document is prohibited without the prior written permission of ECLATEC - Copyright ECLATEC - Document and photographs are not contractually binding. The description of the products and the dimensions given are for guidance only and cannot be construed as a binding commitment by our company, which reserves the right to make any changes it deems necessary without prior notice. Service Communication Eclatec - Photo credits: ©Eclatec, ©iStock

Edition  
**01/2026**