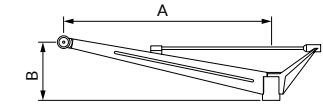


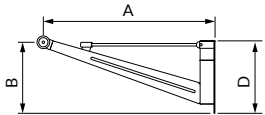


Architek bracket: aluminium, Ø 89 mm
 Lateral fixing of light by ball-and-socket joint
 Styling fixing of the bracket on the pole
Finish: polyester powder coating, any colour available
Pole: special cylindrical-conical steel, Ø 110 mm with Ø 90 x 110 mm reducer
Heights: 6.5 m, 7.5 m, 8.5 m and 9.5 m

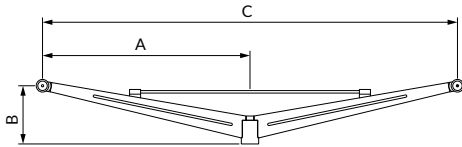
ARCHITEK



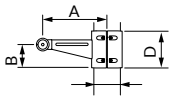
Architek single light bracket



Architek wall bracket



Architek twin light bracket



Architek* counter-light

ARCHITEK	A mm	B mm	C mm	D mm	Tilt	Weight Kg	SCx m²
Single light	600	330	-	-	20°	7	0.14
	900	365	-	-	15°	10	0.18
	1300	365	-	-	10°	11	0.21
	1800	360	-	-	10°	13	0.27
Twin light	600	300	1200	-	10°	13	0.19
	900	365	1800	-	10°	15	0.29
	1300	365	2600	-	10°	18	0.37
Wall bracket	285	135	-	220	0°	2.1	0.03
	860	410	-	465	20°	6.1	0.18
Back light*	400	130	-	200	10°	2.3	0.06

* Mandatory study request

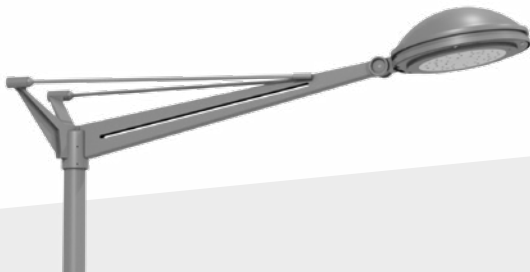
ARCHITEK BRACKETS CONFIGURATION EXAMPLES



Chorus Architek



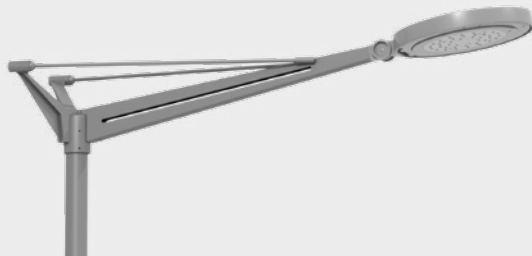
Tsana X Architek



Elipt Architek



Metro Architek



Tsana Architek

ARCHITEK

