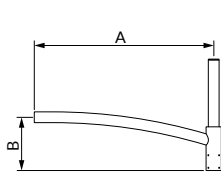
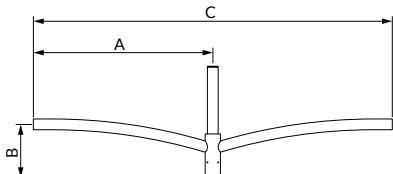


Para bracket: aluminium, Ø 60 mm
 Luminaire fixation: covering or penetrating (standard)
 Styling fixing of the bracket on the pole
Finish: polyester powder coating, any colour available
Pole: cylindrical-conical steel Ø 60/62 mm

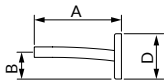
PARA



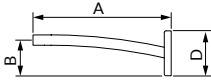
Para single light bracket



Para twin light bracket



Para wall bracket



Para counter-light

PARA	A mm	B mm	C mm	D mm	Tilt	Weight Kg	SCx m²
Single light	800	240	-	-	0°	4	0.07
	1000	295	-	-	0°	4.5	0.08
	1200	365	-	-	0°	5	0.09
Twin light	800	240	1600	-	0°	6	0.10
	1000	295	2000	-	0°	7	0.13
	1200	365	4000	-	0°	8	0.15
Wall bracket	500	155	-	260	0°	2.9	0.03
	800	205	-	260	0°	3.4	0.04
Back light	500	155	-	260	0°	2.9	0.03

PARA BRACKETS

CONFIGURATION EXAMPLES



PARA



Chorus Para



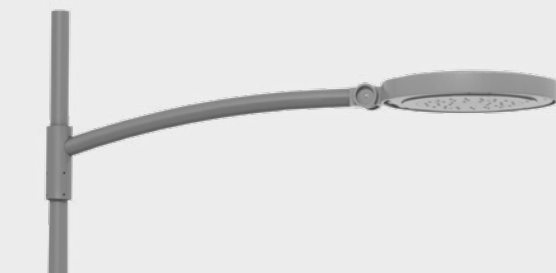
Elipt Para



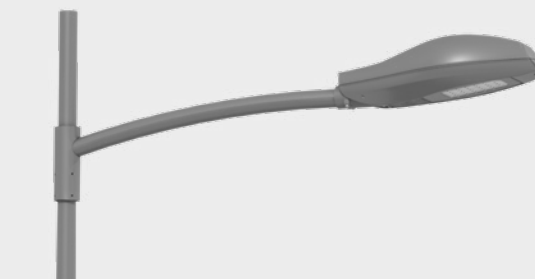
Ixis Para



Moana Para



Tsana Pico



Murena Pico

PARA



Enza Pico



Tilt T Pico



Pixel Pico



Graphic Pico index