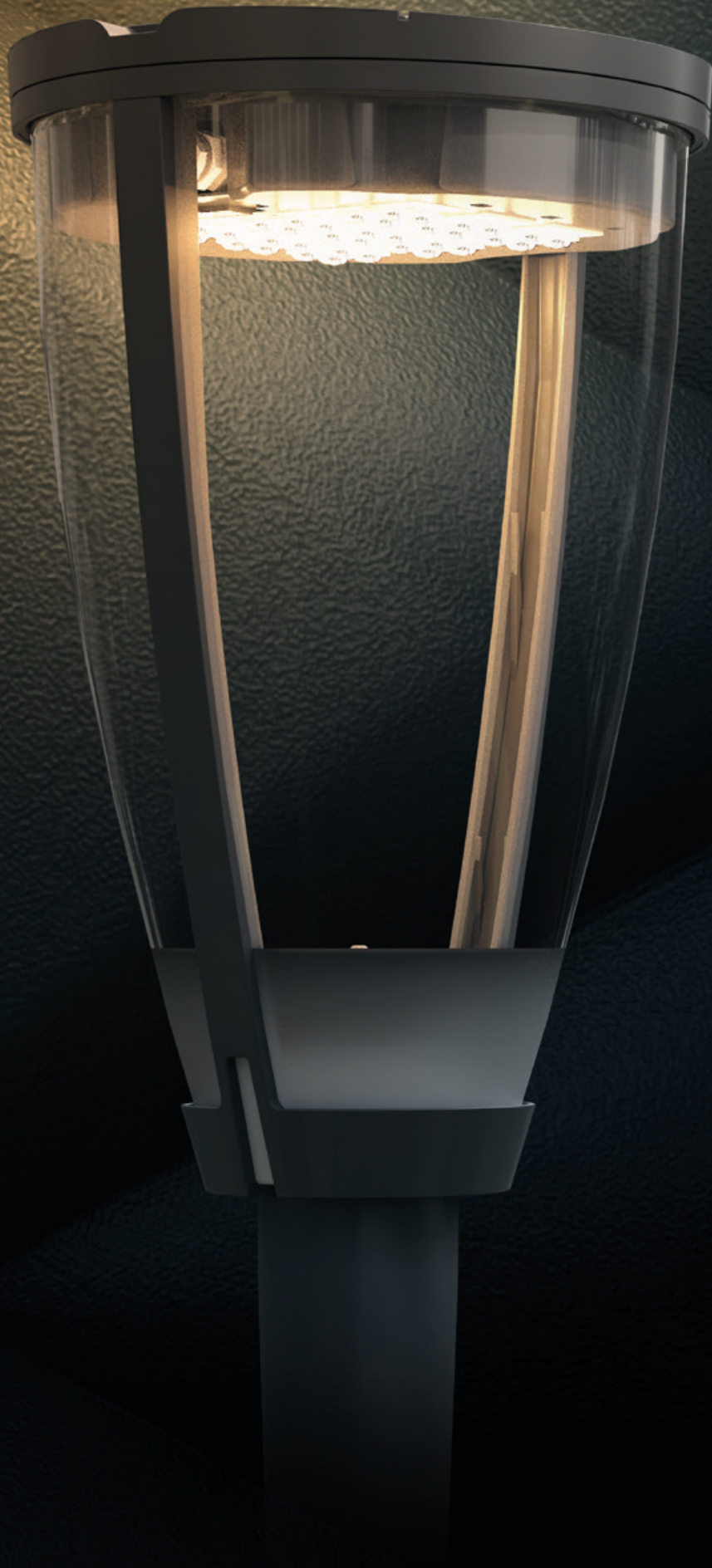


ECLATEC



## **METROPOLE**

Lighting solution

*Design: B. Fortier*



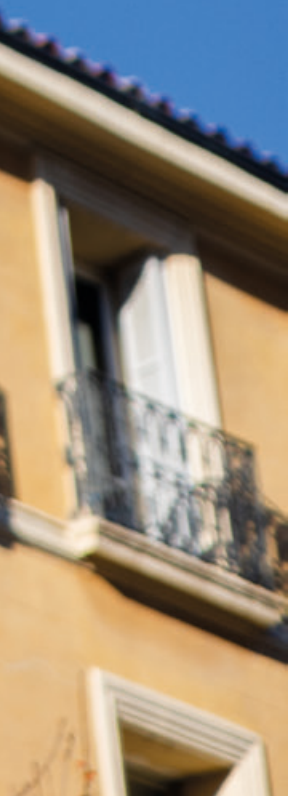


# Metropole, inspired by vegetation

Metropole associates design and lighting in a cohesive and contemporary whole.

Its candelabra in die-cast aluminum, which is part of **Ghm's** DNA, combines sturdiness and refinement, while its fluid lines gives it an intemporal and elegant architectural presence.

A lighting solution thought to be harmoniously and intelligently integrated into its urban environment.



# METROPOLE

Design: B. Fortier

Luminaire:  LED technologies: 

**Montage:** post-top fixation for pole Ø 60 mm,  
with sleeve 70 mm, 2 self-centering pressure screws.

**Constitution:**

Housing in die-cast aluminium.

Polycarbonate Clear deep bowl (PHC),

Structured inferior part.

**Finition:**

Polyester powder coating, RAL colors available upon request.

**LED sources:**

BLS strips, equipped with QUADRALENS lenses.

**Colour temperature:**

Amber (aprox. 1800 K), 2200 K, 2400 K, 2700 K, 3000 K or  
4000 K, others upon request.

**Ingress protection:** IP 66, in accordance with EN 60 529.

IK 10.

**Weight - windage area:** 7,13 kg - 0,13 m<sup>2</sup>.

Pre-wired in in factory.

**Material balance**

Aluminum 57%, Plastics 34%, Steel 7%, Others 2%.

High recyclability rate.

In accordance with RoHS directive.

**SMART**

- ✓ Smart-Ready (ZD4i)
- ✓ Night dimming
- ✓ Detection
- ✓ Moonlight technology
- ✓ Tunable White
- ✓ WIZARD telegestion

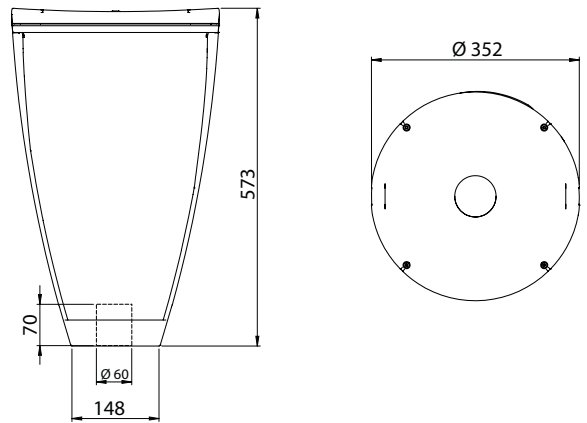
Details on SMART fonctionnalités in the LED synoptic available  
on the GHM and ECLATEC websites.

**SOURCES AND DISTRIBUTION OPTIONS**

QUADRALENS: ERS, ERL, ERE, ECa, ETS, LRL, LRS, PFA,  
EPD, EPG, Backlight shield: medium or strong

Caption:

**ERS:** Standard Road Illumination, **ERL:** Large Road Illumination,  
**ERE:** Narrow Road Illumination, **ECa:** Circular Illumination  
Version a, **ETS:** Standard Sidewalk Illumination, **LRL:** Large  
Road Luminance, **LRS:** Standard Road Luminance, **PFA:**  
Asymmetrical Beam Projection, **EPD:** Illumination Right  
Passage, **EPG:** Illumination Left Passage





ECLATEC



METROPOLE

# METROPOLE

Design: B. Fortier

## SET DESCRIPTIONS

### PM METROPOLE

One-piece, cast-iron pole with cylindrical candelabra (shape obtained by casting).

**Fixture:** 4 seals Ø 18 mm.

**Center distance:** 220\*220 mm.

**Fixture mounting height:** 4,40 m.

**Luminaire fixture:** dedicated.

**Option:** additional door, equipped with a trapdoor, granting access to 2 power outlets + protections (patented DISTRILEC system - IEC pinout 16A/230V).

### GM METROPOLE

One-piece, cast-iron pole with cylindrical candelabra (shape obtained by casting).

One-piece, cast-iron cross section stock. 2-light configuration.

**Fixture:** 4 sealings Ø 24 mm.

**Center distance:** 250 mm\*250 mm.

**Luminaire fixture height:** 6,10 m.

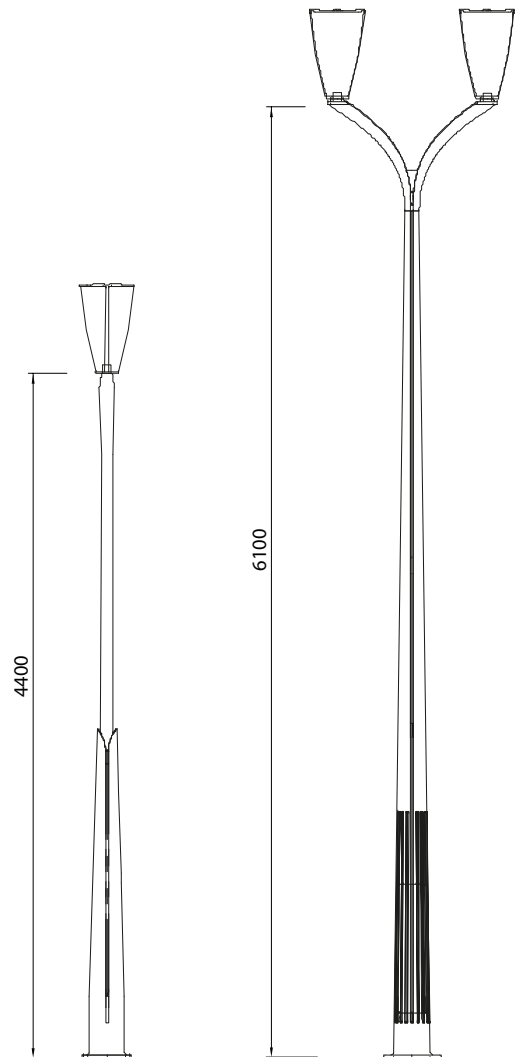
**Luminaire fixture:** dedicated.

**Projection to luminaire mounting point:** 0,48 m.

**Options:** additional door, equipped with 2 trapdoors, granting access to 2\*2 power outlets + protections (patented DISTRILEC system - IEC pinout 16A/230V).

Up to 2 removable kakemono arms supports (configuration to specify for the order).

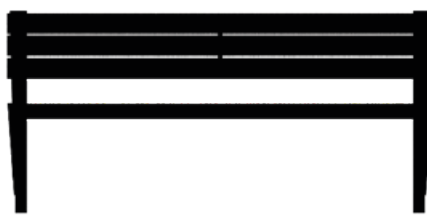
IP66 power outlet (for illuminations) may be integrated to the junction of the 2 stock arms (configuration to specify for the order).



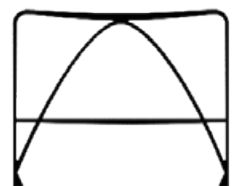
## ASSOCIATED URBAN FURNITURE



Bin



Bench



Barrier





ECLATEC

METROPOLE



# METROPOLE

Design: B. Fortier



## TECHNICAL DESCRIPTION



### MECHANICAL INTERFACES

Post top luminaire: Top mast fixation Ø 60 mm, with sleeve 70 mm, 2 self-centering screws.



### LUMINAIRE MAINTENANCE

Access to equipment after removal of the cover by removing 4 captive screws, safety wire.

### LED SOURCES MAINTENANCE

Access to sources after removal of the cover by removing the 4 captive screws and the heatsink by the 2 lyre screws.

## COMPLIANCE WITH « LIMITATION OF LIGHT POLLUTION »

from the 27th of December 2018 (outside specific restriction zones):

- **ULR:** under 1%
- **CIE n°3 flow code:** over 95%
- **Colour temperature:** 3000 K; others upon request
- **Surface density:** Determined by the ECLATEC design office after analysing the project's data
- **Intrusive lighting:** Installation recommendations to define light intrusion
- **Supply:** By flashcode of all mandatory information required by the manager











2025 edition

ECLATEC

41 Rue Lafayette  
CS20069 Maxéville  
54528 Laxou cedex, France  
Phone: +33 (0)3 83 39 38 00

[www.eclatecinternational.com](http://www.eclatecinternational.com)



Member of the AGORA MAKERS group