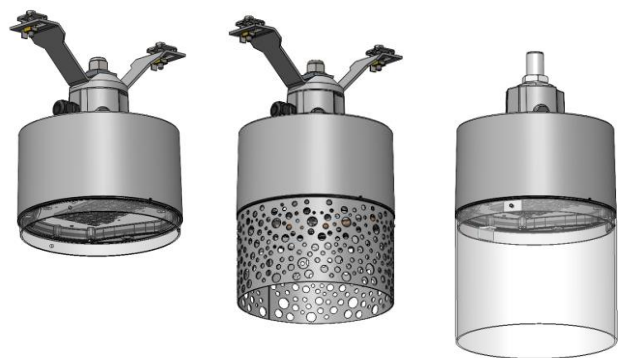


ENZO 2



IP66

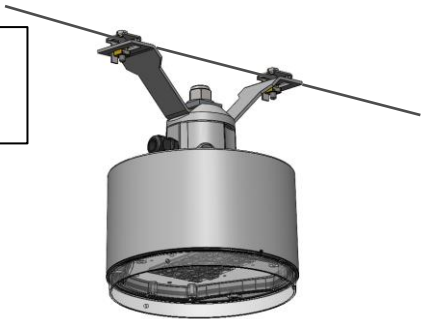
RoHS

220-240V 50Hz

	IK	kg	SCx
ENZO 2	10	5,7 kg	0,1 m ²

Fixations/fasteners/fissaggi

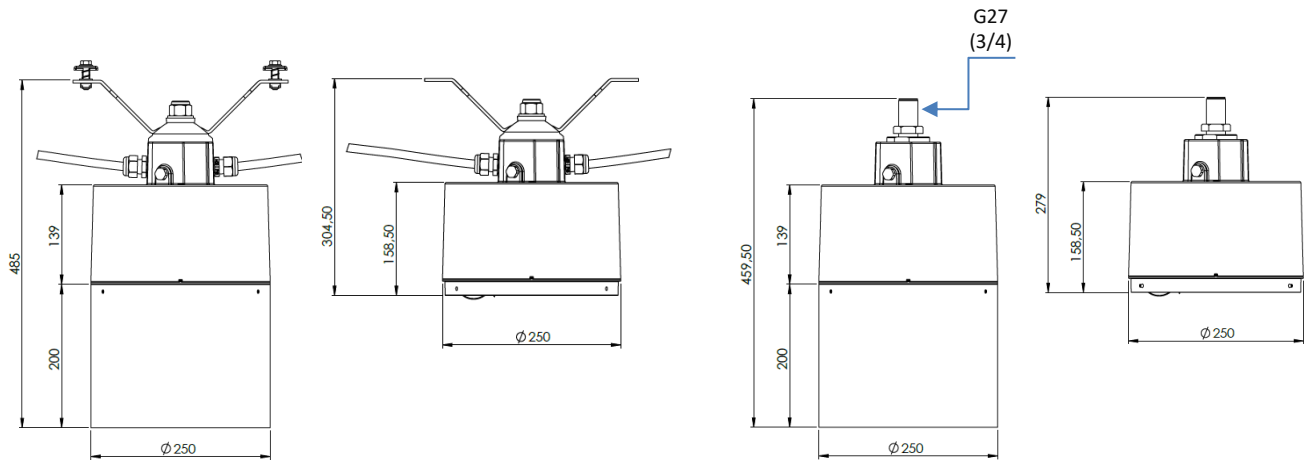
CATENAIRE
Catenary
Catenaria



SM G27
Suspended ¾
Sospese ¾

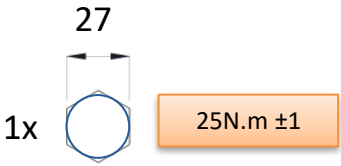
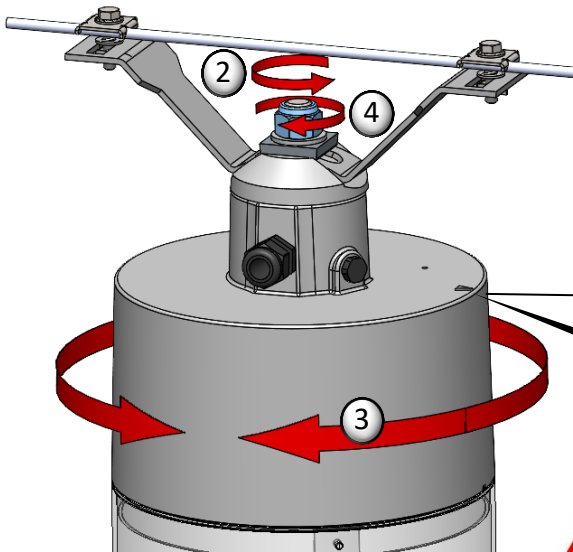
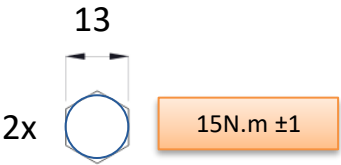
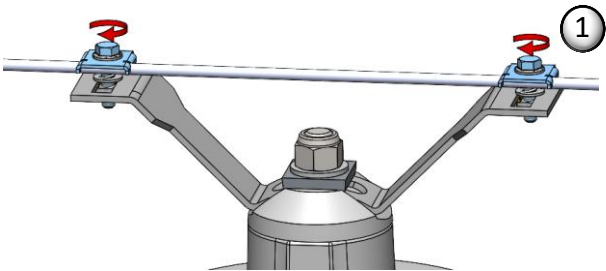


Dimensions/dimensioni

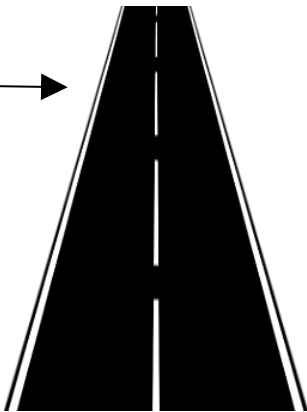
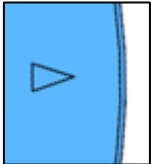


La source lumineuse contenue dans ce luminaire ne doit être remplacée que par le fabricant ou son agent de maintenance ou une personne de qualification équivalente.
The lighting part included in this luminaire must be maintained by the manufacturer, an authorized service agent or a person with similar technical qualification.
La parte illuminante inclusa in questo apparecchio deve essere sottoposta a manutenzione dal produttore, da un centro di assistenza autorizzato o da una persona con qualifiche tecniche simili.

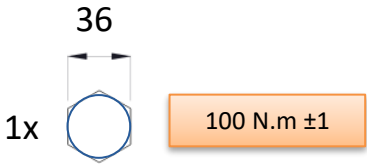
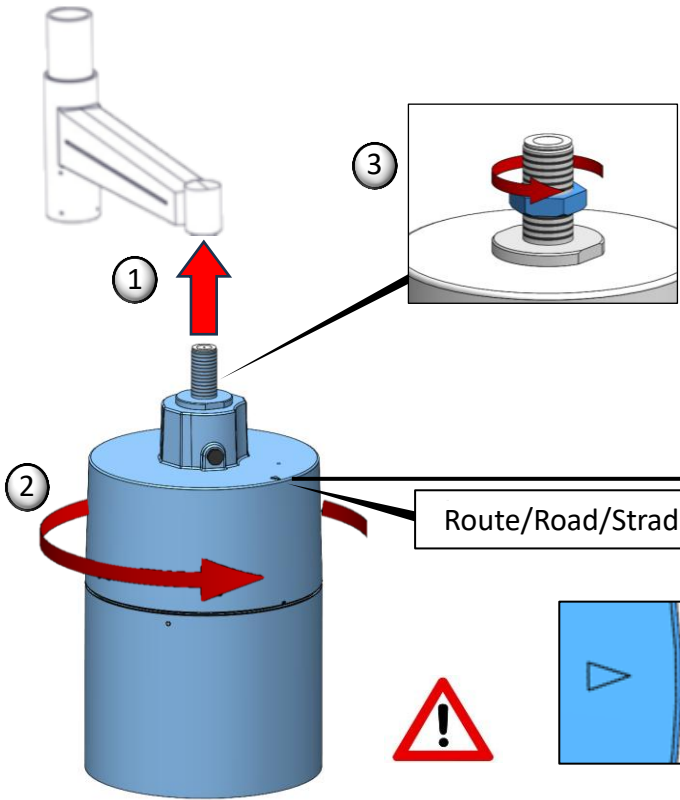
Catenaire/Catenary/Catenaria



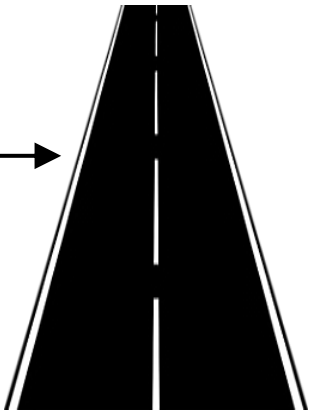
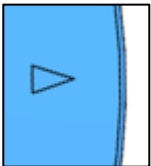
Route/Road/Strada



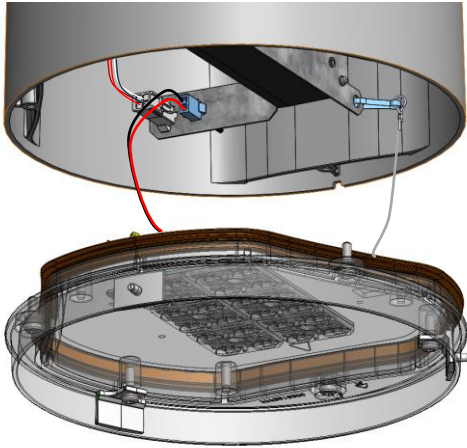
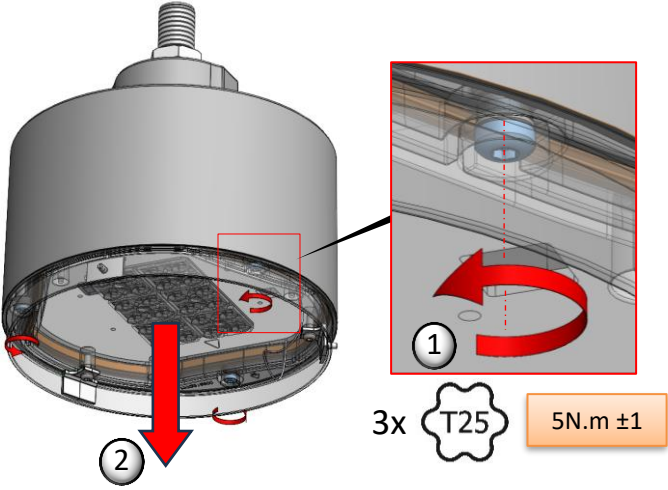
Suspendu/Suspended /Sospese



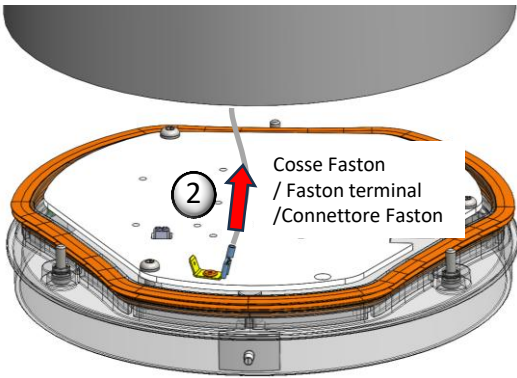
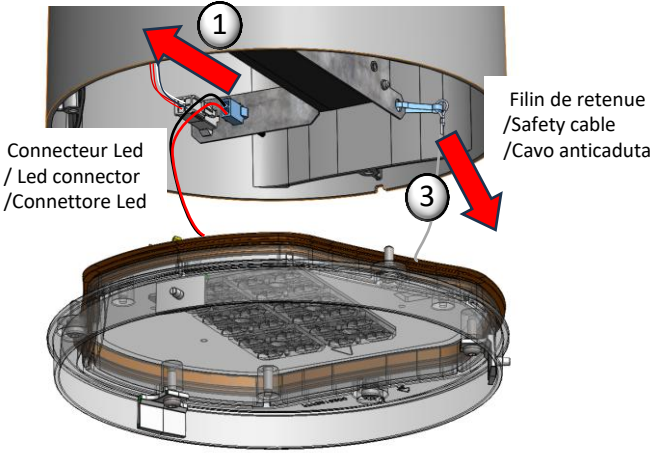
Route/Road/Strada



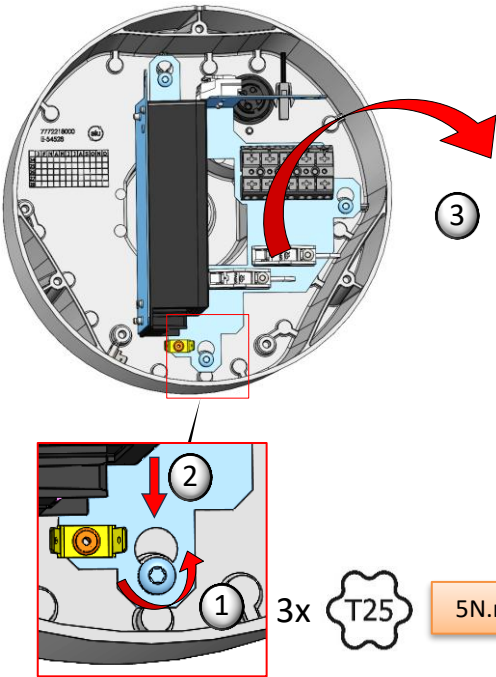
Ouvrir/Open/Aprire



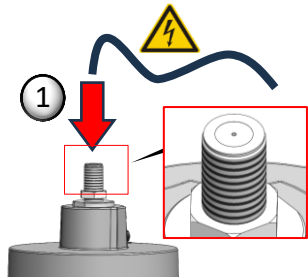
Décâbler/Unplug/Scollare



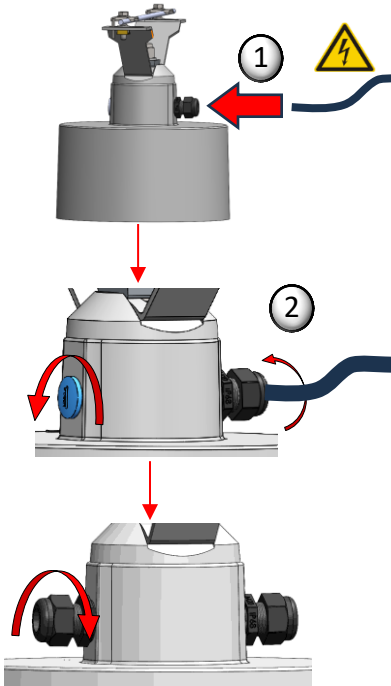
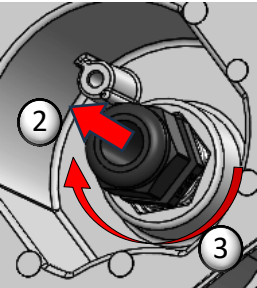
Déposer l'appareillage
/Remove controle gear
/Rimuovere l'apparecchio



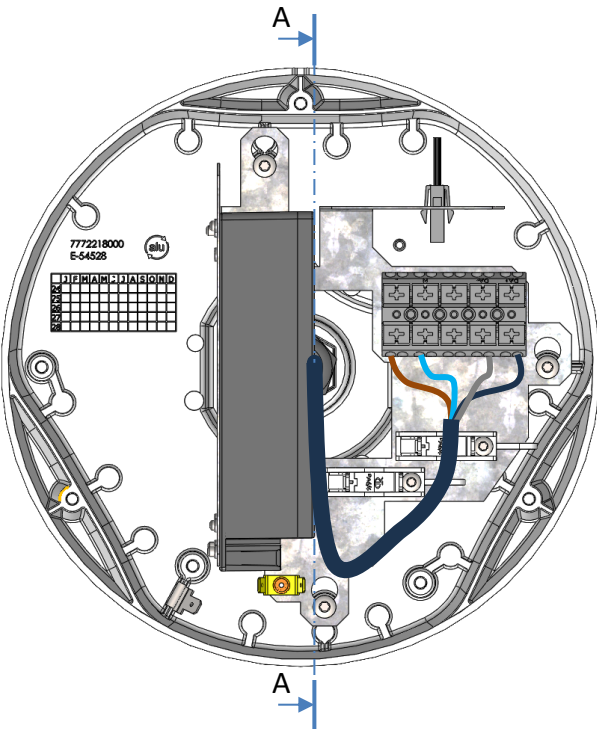
Passage du câble
/Cable routing
/Passaggio del cavo



Passe câble étanche + presse étoupe/
/Waterproof membrane + cable gland
/ Membrana impermeabile + pressacavo



Raccordement électrique
/Electrical connection
/Collegamento elettrico



A-A

